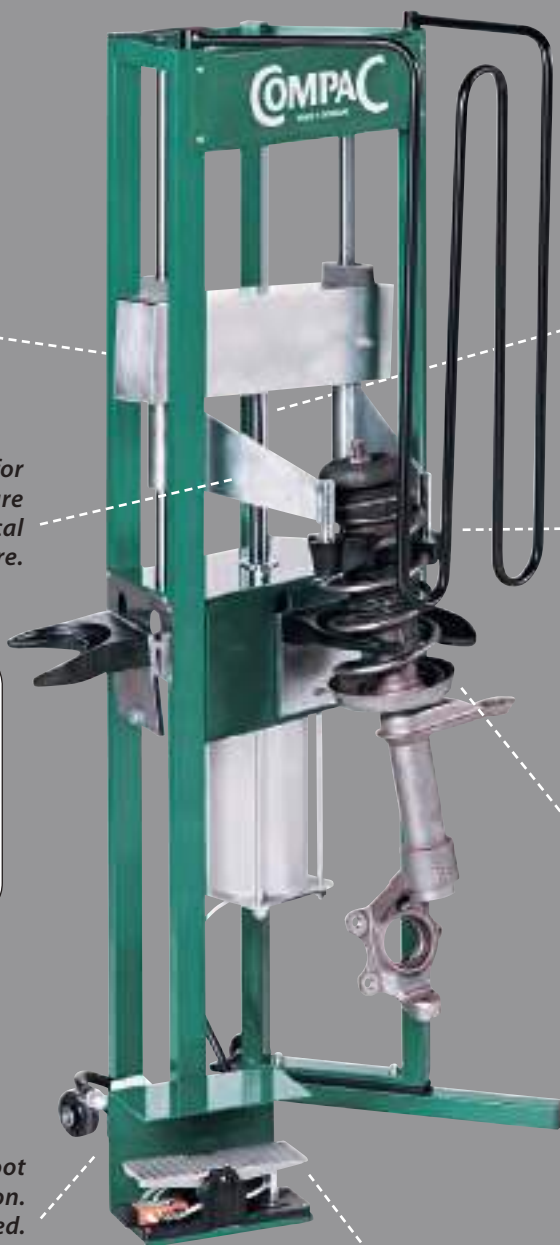


## Spring compressor

Efficient, professional and safe dismounting and mounting of McPherson "struts".

CSC



Safety guard that also ensures an ergonomic work position.

Long stroke of 330 mm.

Safety lock fixate the adjustable arms.

Moveable arms for universal jaws ensure a precise and vertical pressure.

"Universal" swivel jaws that fit all springs. Max. distance between jaws and spring holder up to 390 mm.



2 spring holders (78 - 125 mm and 125 - 200 mm).

Suitable for conical springs.

Ergonomically design and foot operated for "hands free" operation. Air connection required. 8 to 13 bar (Max!).

Weight: 65 kg.

Foot operated air approach and return.

### Accessories

929050



Strut vice. Recommended for BMW 3-serie, Toyota RAV4, Toyota Avensis.

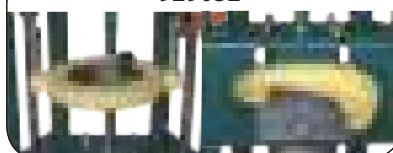
### Vehicle specific solutions

929059



Mercedes C-class bracket from 2010 and later

929052



Mercedes A, B, C and E Class bracket (C-class until 2009).

929053



Low lip jaws for some Japanese produced cars.



Keyword:  
Compac CSC



Enough power to compress strong springs on vehicles like Ducato, Jumper and Boxer.



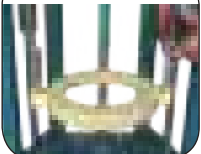
McPherson strut mounted in strut vice.

Mobile. Easily moved between workstations. Ready for use in a matter of seconds.



Easy access to mounting and demounting of the top nut.

929056



Porsche Cayenne,  
VW Touareg bracket.

929051



Spring holder 105 / 182 mm. Recommended for Renault Megane, Renault Clio, Citroën C2, Citroën C3, Peugeot 207, Peugeot 208, Peugeot 307.

929060



Renault Koleos,  
Nissan Qashqai bracket.