



Cosber - Brake Tester for Truck

C-BTT 5x/6x/7x/8x Series

Cosber - Brake Tester Truck



C-BTT series for 13t and 18t axle load:

- ▶ Hydraulic load simulation
- ▶ Four wheel drive (4x4)
- ▶ With automatic gear motor lock function to facilitate the driving in and out of vehicles
- ▶ Two-speed operation mode with lifting load, adapt to different types of vehicle
- ▶ Mechanical components with hot-dip galvanization for protection against corrosion.



C-BTT 5x/6x/7x/8x

Hydraulic load simulation

- ▶ Hydraulic lifting function with lifting height of 200mm and improved testing of multi-axis vehicle
- ▶ Controlled by radio remote control
- ▶ Suitable for almost all trucks and trailers



Technical parameters

Equipment model	C-BTT 5x/6x	C-BTT 7x/8x
Maximum drive over load	13000 kg	18000 kg
Measurement range	0 ~ 40000 N	0 ~ 40000 N
Wheel track width	1000~3000 / 1100~3100 / 1200~3200 mm	1000~3000 / 1100~3100 / 1200~3200 mm
Roller diameter	Ø 208 mm	Ø 248 mm
Roller length	1000 mm	1000 mm
Coefficient of friction (dry / wet)	> 0.7 / 0.6	> 0.7 / 0.6
Roller test speed	2.5 ~ 5 km/h	2.5 ~ 5 km/h
Roller height difference	30 mm	50 mm
Motor power	9 kW 11 kW	15 kW 13~17 kW
Dimensions (L x W x H)	3220 x 1040 x 686 mm	3490 x 1240 x 806 mm
Equipment weight (ca.)	> 1500 kg	> 1700 kg

Lifting Device (Control Box)

- ▶ Remote control for hydraulic load simulation
- ▶ Control box for hydraulic load simulation



Analog – Display



Swivel arm and column mounting

Indicator

- ▶ Brake force
- ▶ Operating mode: Manual, Automatic, 4 x 4
- ▶ User guidance
- ▶ Weight in kg (if weight sensors included)
- ▶ Digital difference displayed in % at LED-display
- ▶ Road adhesion in % for suspension tester
- ▶ Difference for side slip tester in m/km
- ▶ Status lights for different operating modes

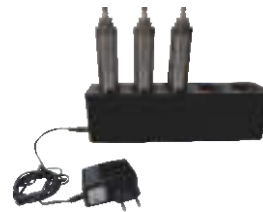
Technical parameters

Dimensions (L x W x H)	830 x 200 x 610 mm
Equipment weight	25 kg
Protection class	IP54
Braking force range	0 ~ 40000 N
Minimum braking force	100N
Side-slip displacement range	-20 mm ~ 20 mm
Minimum side-slip displacement	4 mm
Screen display range	16 characters, 1 line
Braking force display accuracy	1 N

Control Box



Remote Control



Air pressure sensors



Pedal force sensor

Technical parameters

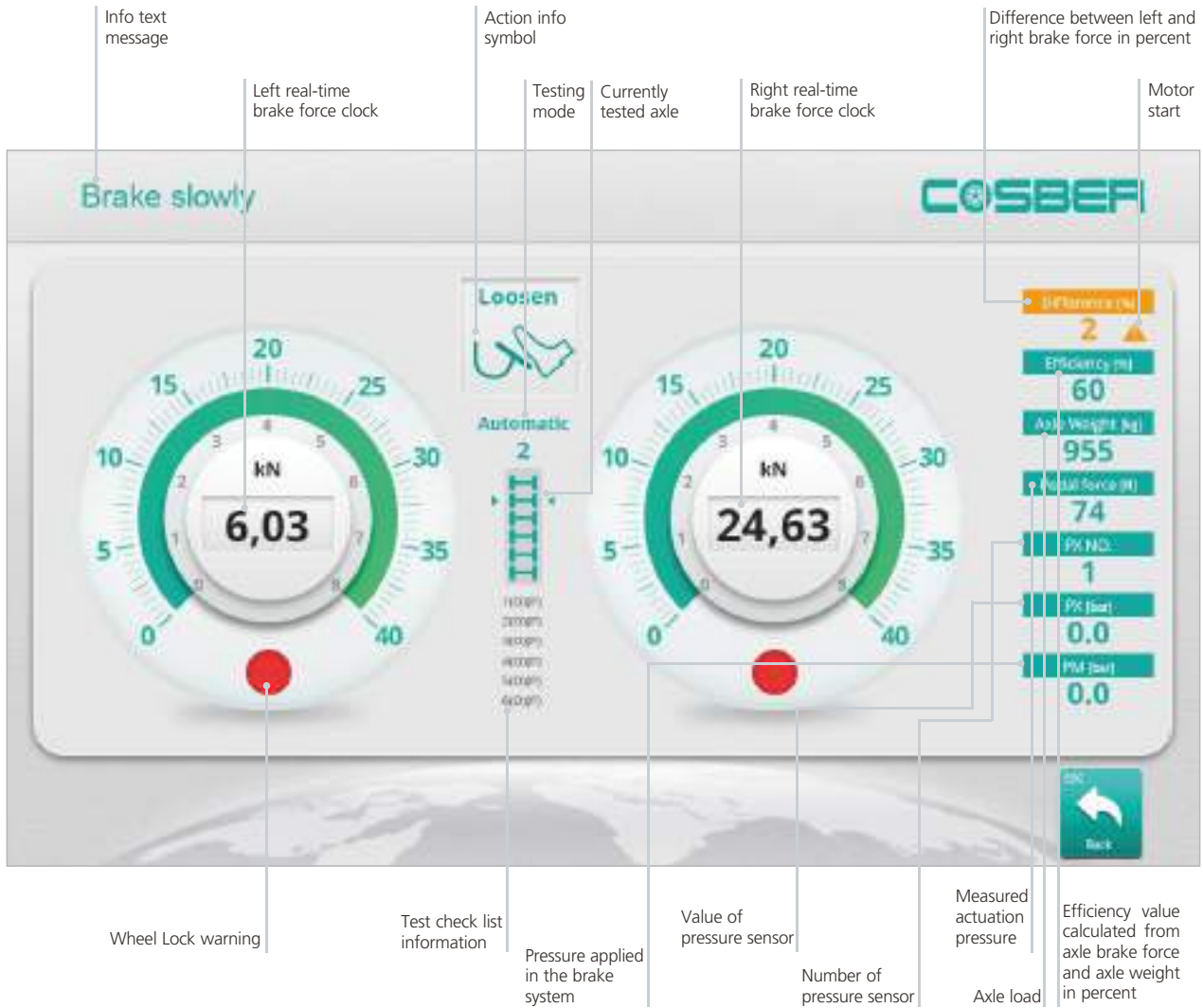
Dimensions (L x W x H)	1050 x 600 x 360 mm
Equipment weight	60 kg
Power supply	AC 3-phase x 400V + PE /50Hz AC 3-phase x 230V + PE/60Hz (optional)
Rated current	400V - 12A 230V - 20A (optional)
Power cable requirements (provided by customer)	5 x 2.5 mm (3P + N + PE)

Calibration Tool

- ▶ Easy to operate
- ▶ High-precision calibration
- ▶ Fast measurement
- ▶ Calibration case (optional)



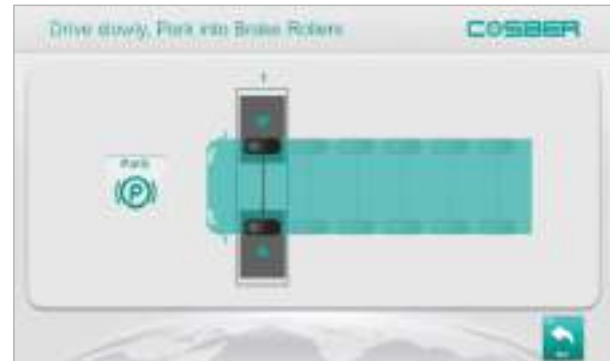
Software



Cosber brake tester software test screen



Ovality measurement



Guided test procedure



Configuration of axles and air-pressure sensor



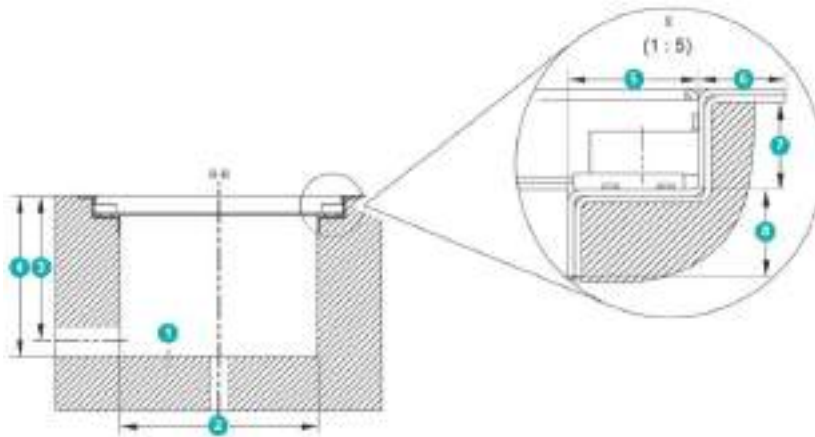
Self-check analog, digital, speedo, weight signal

Features

- ▶ Improved user interface
- ▶ Intuitive use
- ▶ Database functions
- ▶ Print and digital test results



C-BTT foundation



- ▶ Easy to install as the hydraulics of the load simulation are already integrated into the case of the roller set.
- ▶ Easy to fit into common foundations.
- ▶ Simply remove the old tester and install the new one.

Prerequisite to the foundation

Pos.	BTT 5x/6x	BTT 7x/8x
1	C20/25 (DIN EN 19992-1-1)	C20/25 (DIN EN 19992-1-1)
2	820 mm	920 mm
3	575 mm	675 mm
4	650 mm	750 mm
5	120 mm	120 mm
6	80 mm	80 mm
7	93 mm	93 mm
8	80 mm	80 mm

Variants for installation with or without pit



With pit: two separate foundation frames as edge protectors



Without pit: one foundation frame



Installation accessories

BTT 5x/6x	BTT 7x/8x
 <p>separated pit-frame with 1000mm rollers</p>	 <p>separated pit-frame with 1000mm rollers</p>
 <p>non-separated (w/o pit) frame, track width 2700mm</p>	 <p>non-separated (w/o pit) frame, track width 3000mm</p>
 <p>non-separated (w/o pit) frame, track width 2800mm</p>	 <p>non-separated (w/o pit) frame, track width 3100mm</p>
 <p>non-separated (w/o pit) frame, track width 2900mm</p>	 <p>non-separated (w/o pit) frame, track width 3200mm</p>



Proximity switch



Weight sensor



Roller chain



Roller cover plate

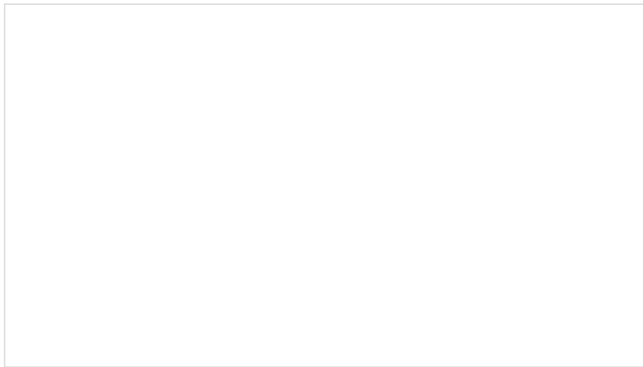
Configuration

Equipment	Type	Standard		Option	
		BTT 5x/6x	BTT 7x/8x	BTT 5x/6x	BTT 7x/8x
Brake Tester	Roller type	Corundum		Spike	
	Roller length	1000 mm		1000 mm	
	Weight system	-		8 Weight sensors	
	Motor power	2 × 9/9 kW	2 × 13/17 kW	2 × 11/11 kW	2 × 15/15 kW
	Frame surface	Hot-dip galvanized		Spray painted (Green)	
	Speed sensor	Yes		-	
	Lifting function	-		Yes	
	Lifting height	200 mm		200 mm	
	Lifting load	4000 kg		4000 kg	
Control Cabinet	Drive type	Two-wheel drive mode		Four-wheel drive mode	
	Drive out support	Electroautomatic		Electro-magnetic Brake	
	Asa communication	Yes		-	
	Supply voltage	Three-phase AC 400V/50Hz		Three-phase AC230V/60Hz	
	Remote control	-		Yes	

Accessories

Item number	Name	Picture
20.02.15.2001	Analog Display 0 - 40 kN	
20.02.15.2003	Swivel arm for Analog Display	
20.02.15.2002	Column	
20.07.00.1020	Lifting device	
20.02.01.9921	Remote control	
20.05.00.2021	Weight sensor set	

Item number	Name	Picture
20.05.00.1021	Air pressure sensor set	
20.05.03.1025	Pedal force meter	
20.99.03.1005	Calibration device	
20.02.01.9920	PC cabinet	
20.05.15.3001	Roller cover plate 13t (C-BTT 5x6x)	
20.07.01.0048	Roller cover plate 18t (C-BTT 7x8x)	
20.05.00.1002	Pit safety KIT 1 (2,5 m)	
20.05.00.1003	Pit safety KIT 2 (1,5 m x 2,5 m)	
20.05.00.1004	Pit safety KIT 3 (2,5 m x 2,5 m)	
20.06.00.1000	Pit safety swivel arm lengthwise (25 m)	
20.07.04.0701	PC-Connection and PC-Visualization Truck Software (without car)	
20.07.04.0702	PC-Connection and PC-Visualization Truck Software (with car)	



Cosber GmbH
 Bretonischer Ring 12
 85630 Munich-Grasbrunn
 Germany

Office: +49 (0) 89 262 07 66-00
 Fax: +49 (0) 89 262 07 66-60
 Email: info@cosber.de
www.cosber.de