
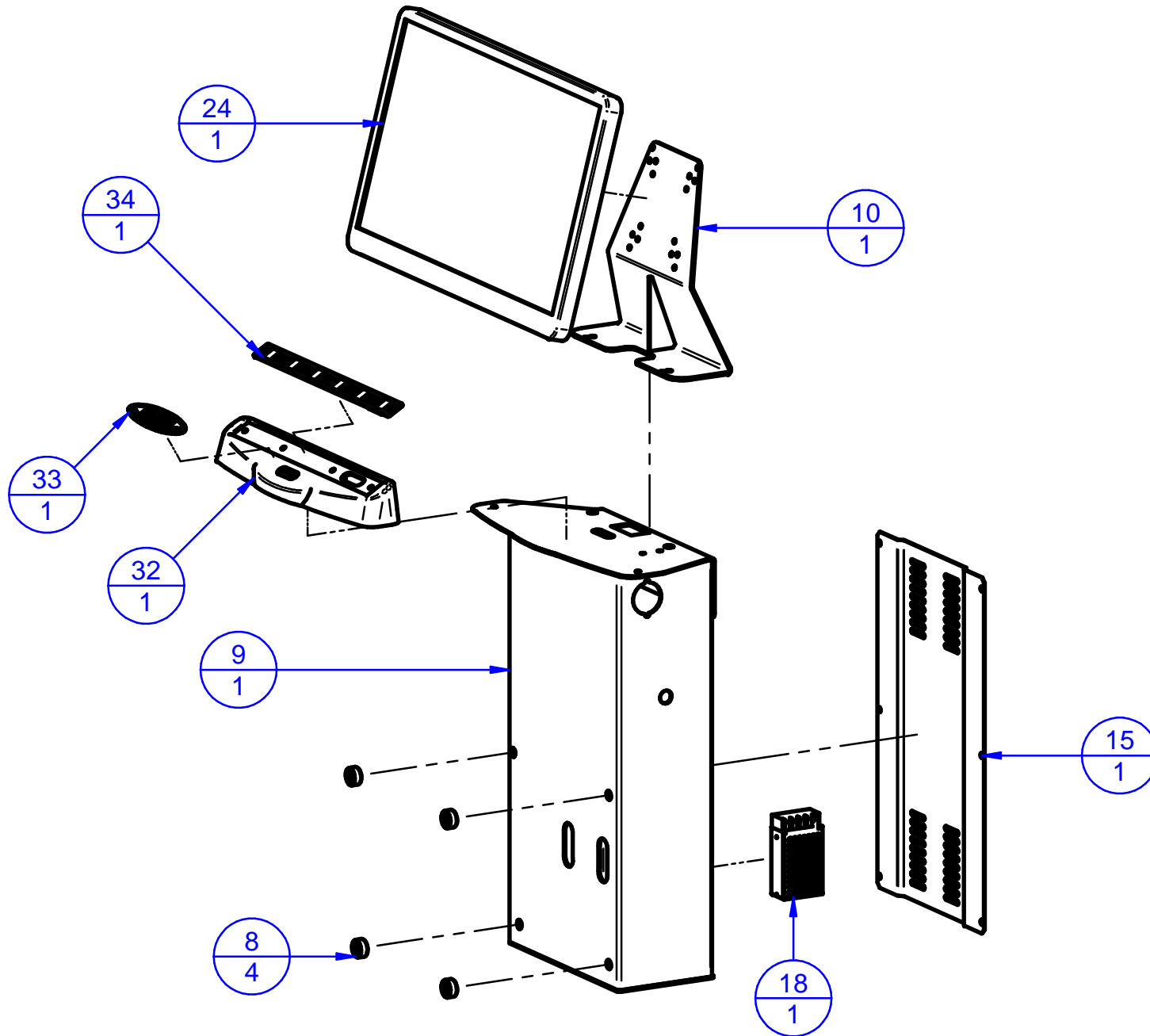
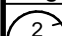
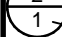
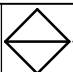


Legenda: (2/1) Ref. number / Q.ty (◇/1) Sub-table exists		Codice (Code): E666.xxx	Descrizione / Description: Equilibratrice V558.G4 VIDEOTRONIC Model V558.G4	Rev: R0 Data (Date): 07/04/20	 FASEP 2000 s.r.l. Ronta - Firenze - Italy
---	--	--	--	--	--



Legenda:

 Ref. number
 Q.ty

 Sub-table exists

Codice (Code):

E666.xxx

Descrizione / Description:

Equilibratrice V558.G4
VIDEOTRONIC Model V558.G4

Rev:

R0

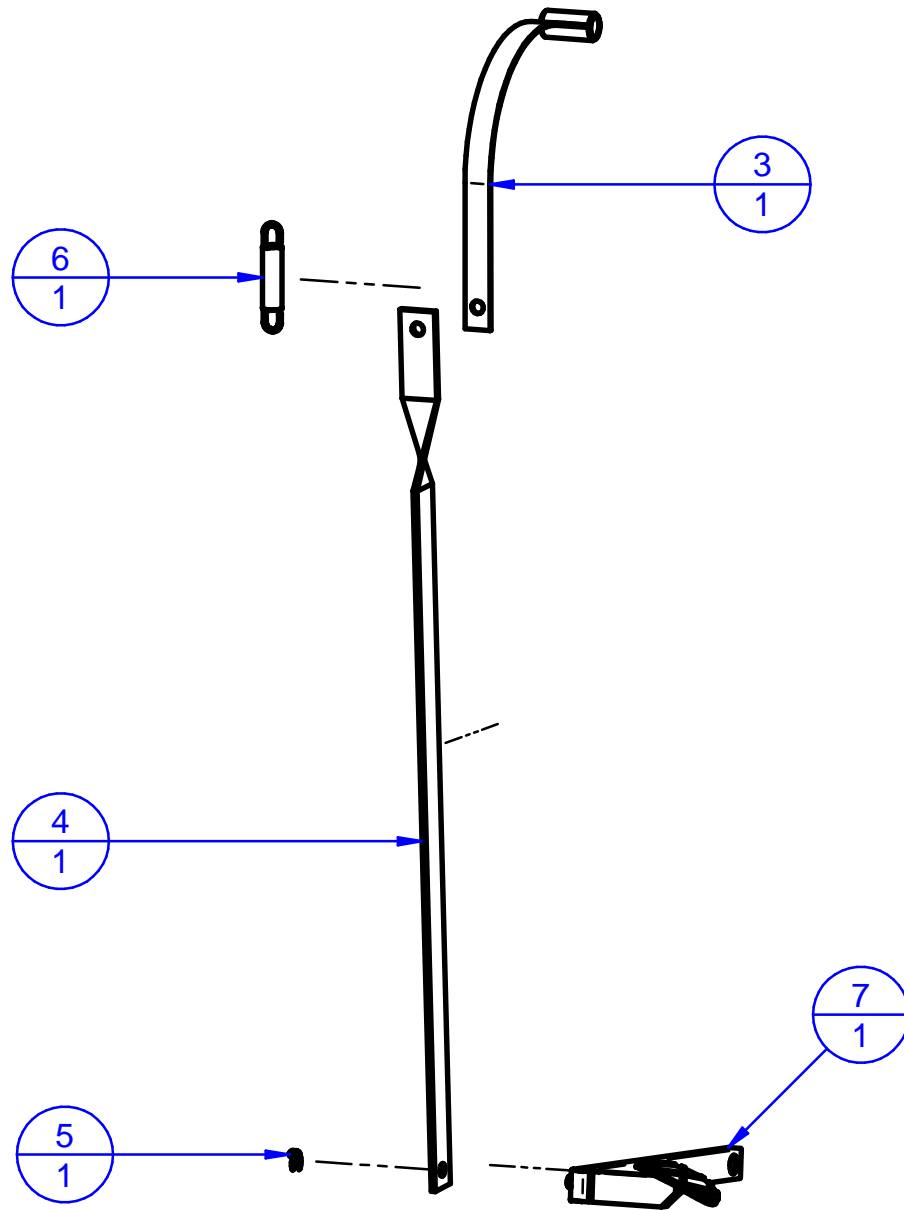
Data (Date):

07/04/20

FASEP

FASEP 2000 s.r.l

Ronta - Firenze - Italy



Legenda:

2 — Ref. number
1 — Q.ty

◊ — Sub-table exists

Codice (Code):

E666.xxx

Descrizione / Description:

Equilibratrice V558.G4
VIDEOTRONIC Model V558.G4

Rev:

R0

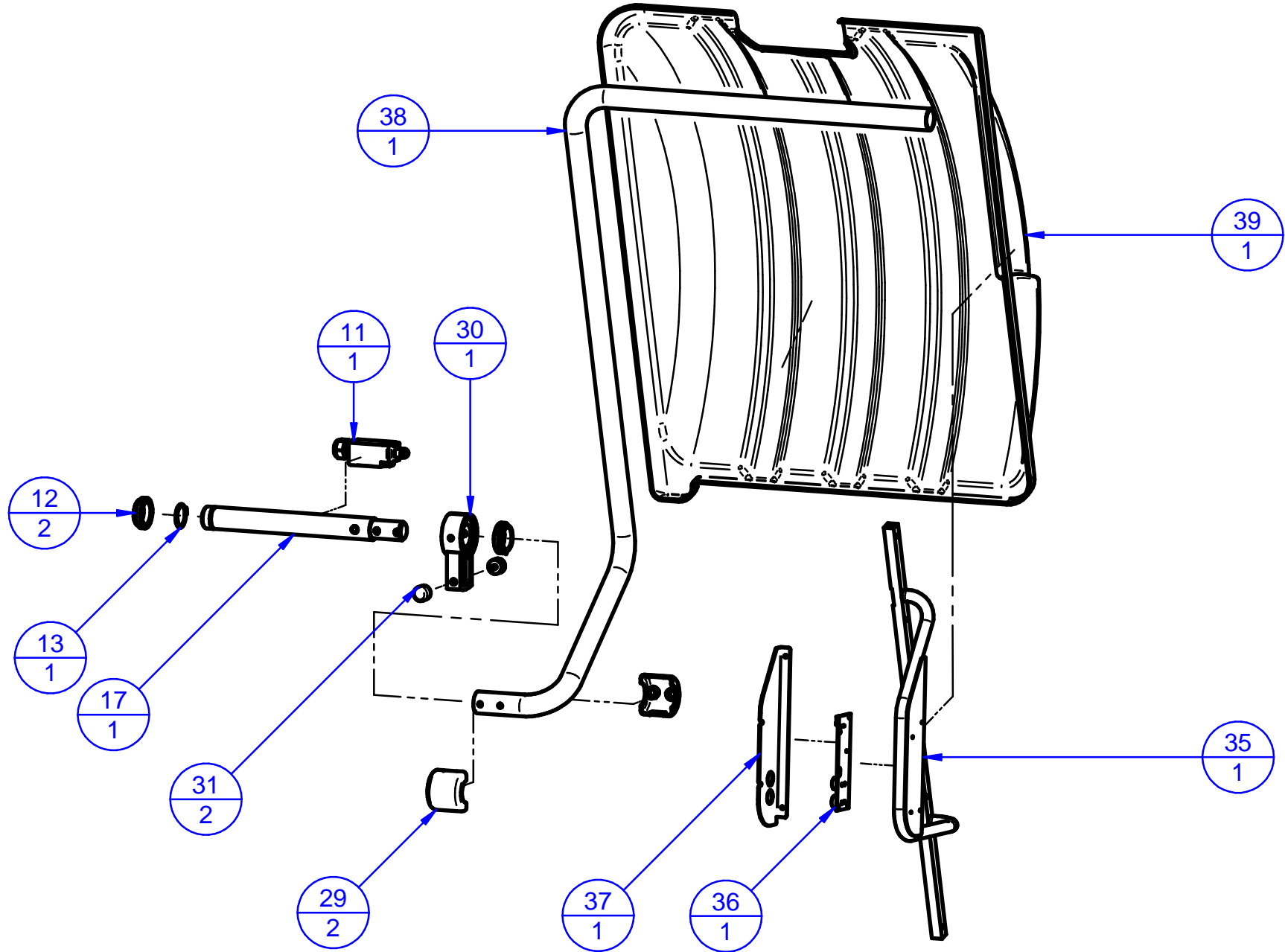
Data (Date):

07/04/20

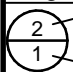
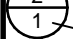


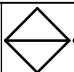
FASEP 2000 s.r.l

Ronta - Firenze - Italy



Legenda:

 Ref. number
 Q.ty

 Sub-table exists

Codice (Code):

E666.xxx

Descrizione / Description:

Equilibratrice V558.G4
VIDEOTRONIC Model V558.G4

Rev:

R0

Data (Date):

07/04/20

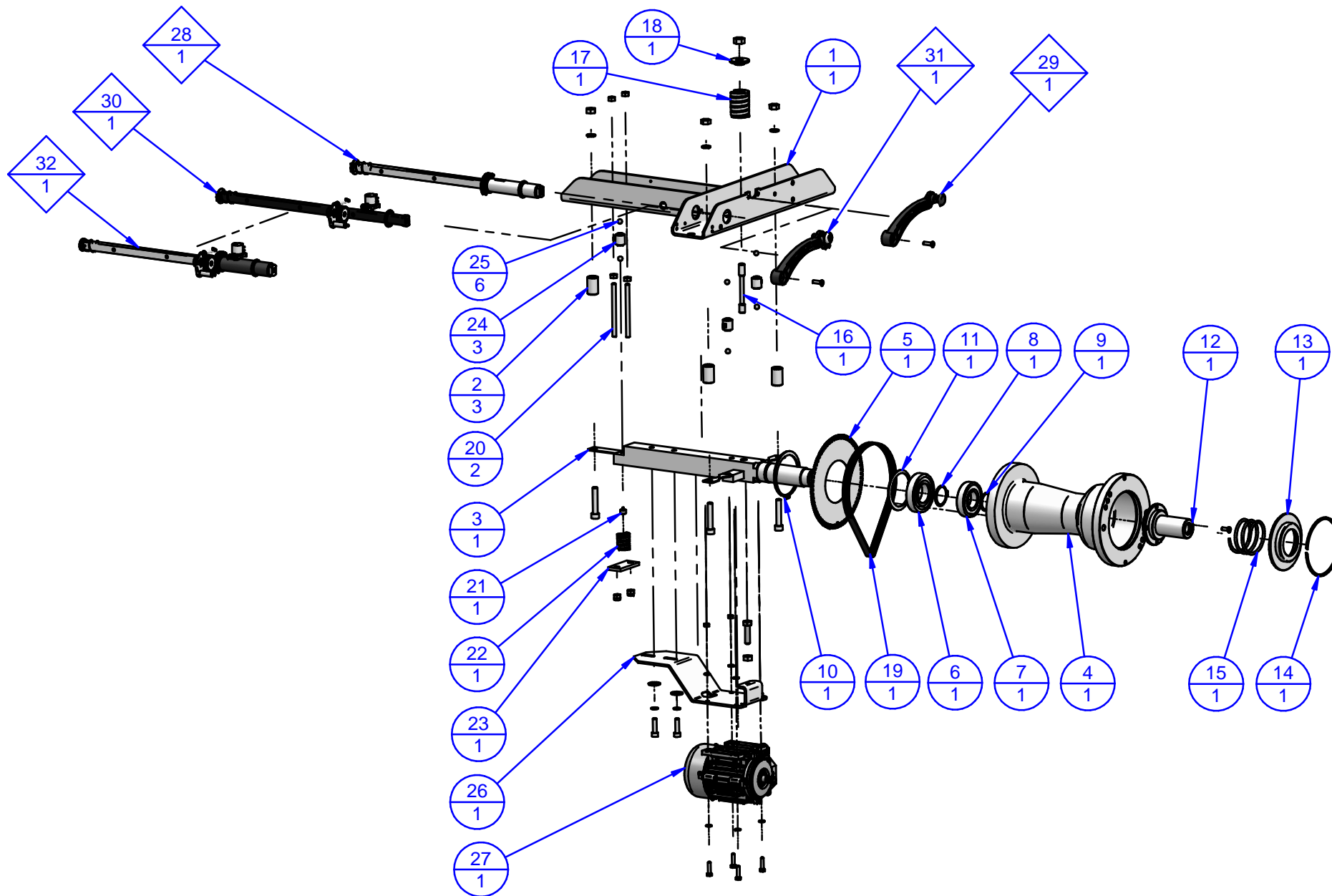
FASEP

FASEP 2000 s.r.l.

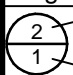
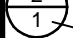
Ronta - Firenze - Italy

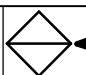
Posizione	Codice	Descrizione	Description (English)	Commenti	Quantità
1	4M4336	Basamento Equilibratrice H700/17	Base		1
2	2M0160	Nasello Porta-flangia	Flange Holder		4
3	4M2292	Nastro freno	Brake-holder		1
4	4M2291	Tirante freno lungo	Brake lever		1
5	9M2499	Anello d'arresto 8SXN09	Ring		1
6	9M0083	Molla TR37	Spring		1
7	4M1957	Pedale freno x equilibratrici	Brake pedal		1
8	4M1451	Distanziale ø20x10x10	Spacer		4
9	4M3514	Schienale VDO 2008	Rear Frame		1
10	4M3516	Supporto Monitor VDO 2008	Monitor Support		1
11	3M0846-7	MicroSwitch Carter V555 completo	Safety Cover Microschitch		1
12	2M2869	Anello in Nylon	Bearing		2
13	9V094019	Anello Seeger ø30 E	Seeger Ring		1
14	3ES682	Scheda 1140-06	1140-06 Board		1
15	4M3515	Coperchio x schienale VDO 2008	Cover		1
16	2M3454	Presp. FASEP Made in Italy 600x108	FASEP Sticker		1
17	4M3517	Asta incernieramento carter VDO 2008	Rod		1
18	9E3456	Alimentatore MainWell RD-25-12	power supply		1
19	3EV626	Lampada a LED x Equilibratrici	LED light	Only for Laser Line machines	1
20	3ES568-8	Scheda 1137-06L USB	1137-06L Board		1
21	3M863	GRUPPO OSCILLANTE G4 HD (3Ph.40)	G4.40 (98RPM) Motor assy		1
22	3ES718-2	Scheda 1198-02B1	1198-02B1 Board	Only for .A and .DA machines	1
23	3ES718-1	Scheda 1198-02A1	1198-02A1 Board	Only for .DLK and .ULK machines	1

Posizione	Codice	Descrizione	Description (English)	Commenti	Quantità
24	9E3154-1	Monitor 19.5" 16/9 LCD SLIM	Monitor 19.5" 16/9 LCD SLIM		1
25	2M4419	Presp. V558 (H30 Bianco)	V558 Sticker		1
26	2M0934-1	Coperchio portapesi smussato	Cover		1
27	3ES714	Scheda 1190-00	1190-00 Board	Only for Laser line machines	1
28	3M710-2	Gruppo Elettronico WinCE SECO A62	Electronic Group		1
29	2M4254	Manicotto per Carter	Carter plastic half-shell		2
30	4M3432	Biella di battuta carter	Connecting Rod		1
31	9M2875	Piedino di battuta (PM ø20x15 M6)	Vibration dampers		2
32	2M2934	Supporto Tastiera WinCE	Keyboard Support		1
33	2M3492	Tastierino Win-CE	Keyboard		1
34	2M2933	Tastiera Funzioni LCD	Keyboard		1
35	4M4474	Supporto Sistema misura automatico	Sonar support		1
36	3ES702-3	Scheda 1193-02	1193-02 board		1
37	4M4473	Coperchio supporto sonar	Sonar cover		1
38	4M4239	Tubo sostegno carter V585 sonar	Wheelguard support pipe		1
39	2M2842	Carter copri ruota in ABS	Safety Cover		1



Legenda:

 Ref. number
 Q.ty

 Sub-table exists

Codice (Code):

3M863

Descrizione / Description:

GRUPPO OSCILLANTE G4 HD (3Ph.40)
G4.40 (98RPM) Motor assy

Rev:

R1

Data (Date):

26/11/18

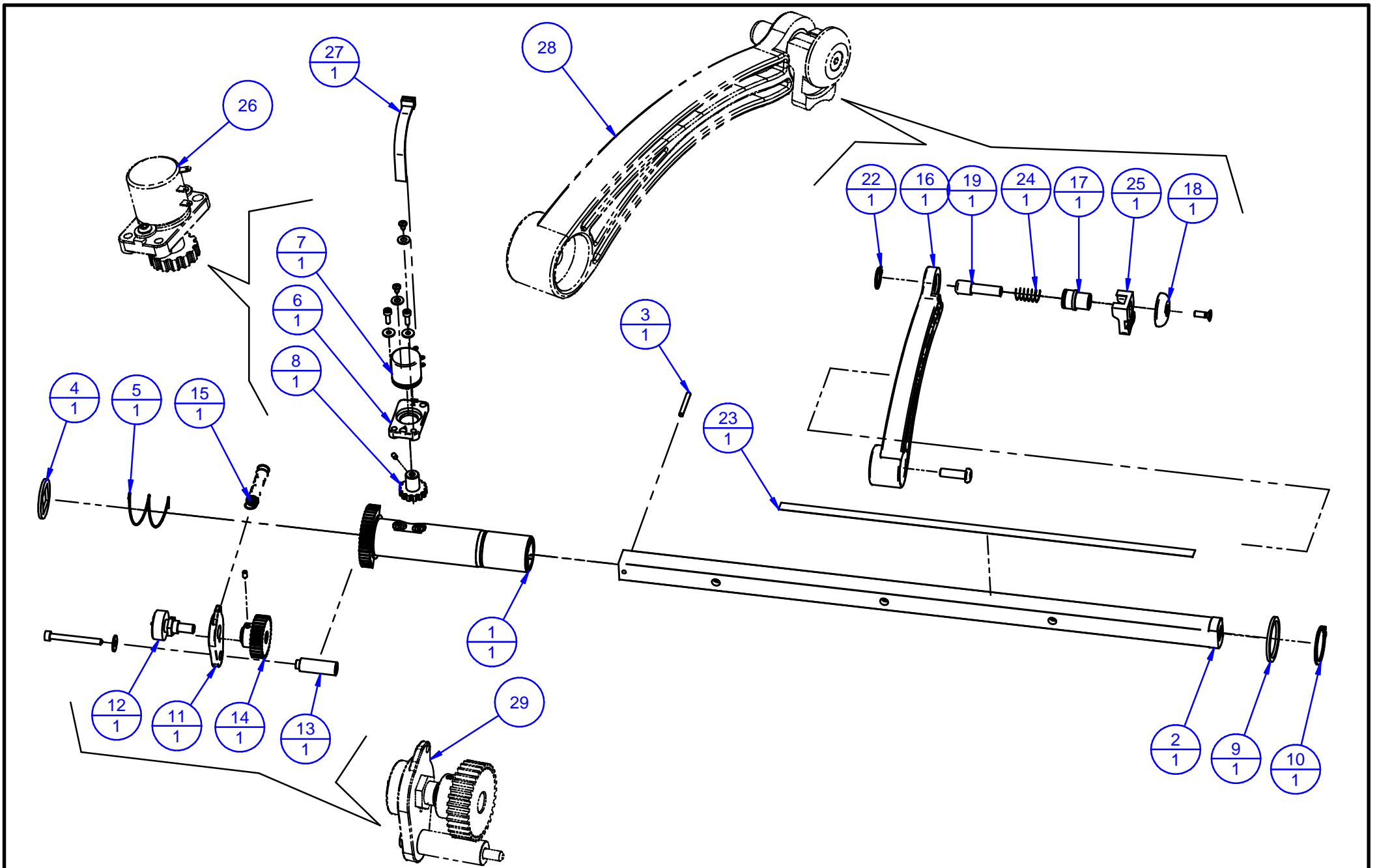


FASEP 2000 s.r.l.

Ronta - Firenze - Italy

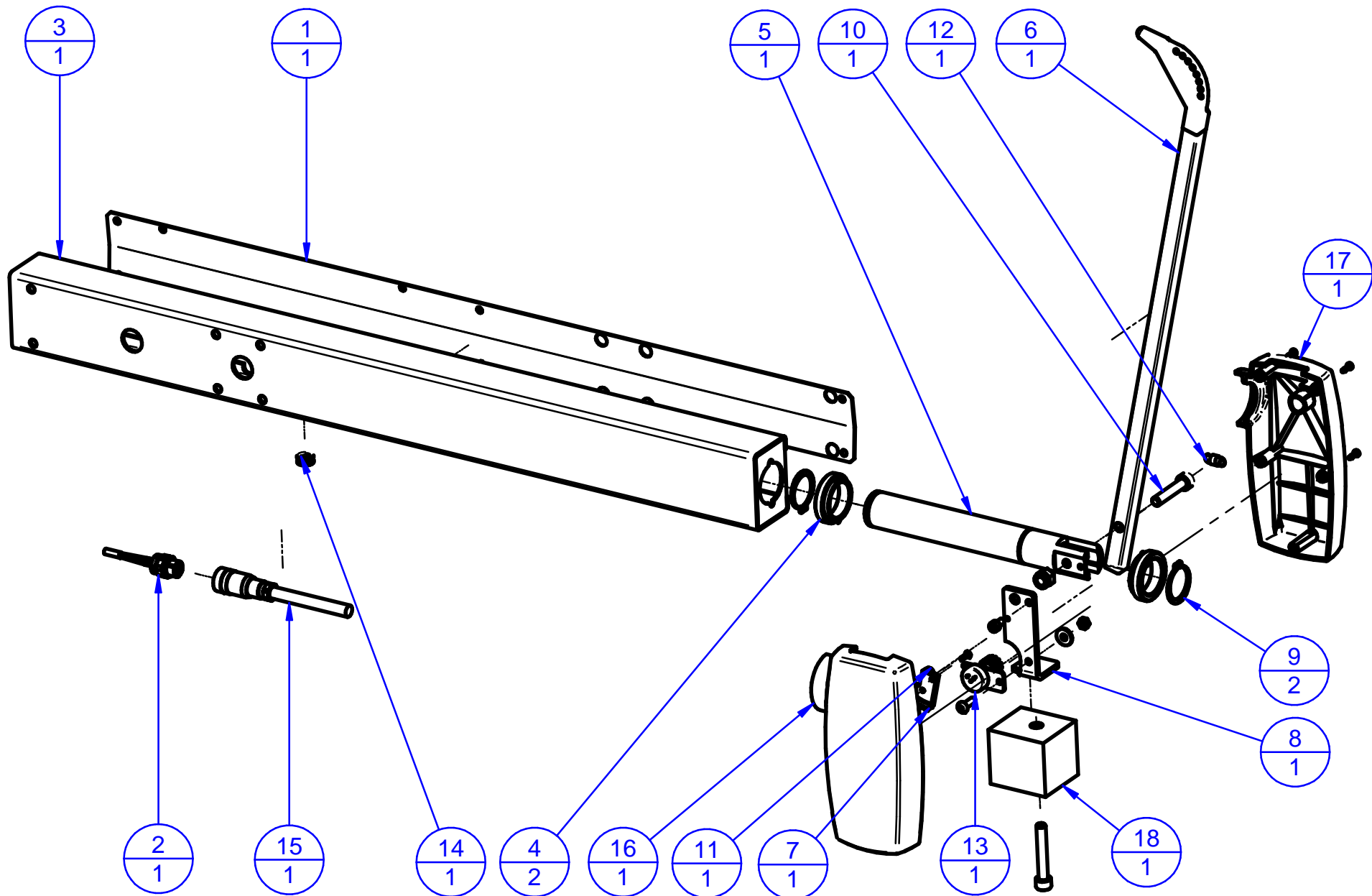
POS	RSP	Codice (Code)	Descrizione	Description	Q.tà (Q.ty)
1*		4M2848	Controtelaio x gruppo HD2 (Light)	Support	1
2		4M2771	Distanziale	Spacer	3
3		4M2849	Albero Centrale gruppo HD	Central Shaft	1
4		4M2162	Manicotto - Campana HD2	Bell	1
5		2M2256	Disco ricerca ø194x64T	Position disk	1
6		9C0026	CUSCINETTO Radiale 6208 ZZ	Ball Bearing	1
7		9C0025	CUSCINETTO Radiale 6207 ZZ	Ball Bearing	1
8		9V094014	ANELLO DI ARRESTO Ø40 E	Seeger Ring	1
9		9V094047	ANELLO DI ARRESTO Ø35 E	Seeger Ring	1
10		9V094048	ANELLO DI ARRESTO Ø88 E	Seeger Ring	1
11		9V093013	ANELLO DI ARRESTO Ø80 I	Seeger Ring	1
12		4M2164.40	Attacco Flangiato HD ø40	HD Support ø40	1
13		2M2141	Disco premi-molla	Disk	1
14		9V093042	Seeger ø118I senza becchi	Seeger Ring	1
15		2M1849	Molla a compressione ø67x110x4.5	Spring	1
16		2M2320	Tirante sfinato per HD2	Pool	1
17		9M2263	Molla G40x51	Spring	1
18		2M2264	Scodellino per molla G40	Flange	1
19	x	9M2839-3	Cinghia TB2 630 8 Nerv.	8 ribs belt	1
20		4M1004	Barra Filettata M8x112	Pool	2
21		4M2857	Boccolo richiamo x molla	Pin	1
22		9M1204	Molla G26x32	Spring	1
23		4M2813	Traversino	Support	1
24	x	3EV556	Sensore PIEZOXID MATROC 2007	Piezo Sensor	3
25		9C1016	Sfera 3/8"	Ball	6
26		4M4025	Supporto x Motore T56 Customized	Motor support	1
27		9M3949	Motore T56 b3 4P Albero speciale	custom electric motor	1

POS	RSP	Codice (Code)	Descrizione	Description	Q.tà (Q.ty)
28		3M537	Gruppo misura Alu-s non sensorizzato	Not sensorized ALU-S system	1
29		3M2573	Tastatore ALU-S	ALU-S Distance gauge	1
30		3M648	Gruppo ALU-S.2005 sens. completo	ALU-SE Measuring System Assy	1
31		3M2573-2	Braccetto tastatore mobile completo	ALU-S Distance measuring rod	1
32		3M739	Gruppo misura ALU-SE (corsa lunga)	ALU-SE Measuring System Assy	1

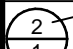




Legenda: Ref. number Q.ty Sub-table exists		Codice (Code): 3M648 + 3M2573-2	Descrizione / Description: Gruppo misura ALU-SE 2008 ALU-SE Measuring System Assy 2008	Rev: R1	Data (Date): 03/12/09	 FASEP 2000 s.r.l. Ronta - Firenze - Italy
--	--	--	---	-------------------	---------------------------------	---

POS	RSP	Codice (Code)	Descrizione	Description	Q.tà (Q.ty)
1		2M2509	Corpo Bandierina ALU-S	ALU-S Body	1
2		2M2510	Asta scorrevole x ALU-S	Sliding rod	1
3		9V088024	Spina elastica ø3x26	Spring Pin	1
4		2M2646	Disco ritegno molla ALU-S	Stop Washer disk	1
5		2M2645	Molla a compressione De24 d1 NT30 Lo450	Spring	1
6		4M3276	Supporto potenz. dist. Alu-s	Distance Pot holder	1
7	x	9E2800	Potenziometro servo 534S103 10K	Servo Pot	1
8		2M2374	Puleggia dentata 13XL	Pulley	1
9		9V700019	Anello a spessore LMKAS d.35E	Ring	1
10		9V700018	Anello Seeger Ø 27E	Seeger Ring	1
11		2M3277	Supporto pot. diametro Alu-S	Diameter Pot holder	1
12	x	9E2786	Potenziometro 157B103 10K	Pot	1
13		2M2643	Distanziale staffa Alu-s	Spacer	1
14		3M2639	Ingranaggio Z30 Completo	Gear	1
15		2M0962	Molla a Trazione ø9x50	Spring	1
16		2M2573	Braccetto bandierina ALU-S	Rod	1
17		2M3373	Camicia tastatore ALU-S (13-25)	Jacket for ALU-S rod	1
18		2M2611	Tastatore x Alu-s	ALU-S rod	1
19		2M3374	Pistoncino x tastatore Alu-s (13-25)	Piston	1
22		9V700044	Anello seeger ø14E	Seeger Ring	1
23		2M2268-1	Striscia numerata bandierina (90-390)	Scale	1
24		9M0885	Molla CO12 De9.3 d0.65 NT8 Lo22	Spring	1
25		2M3461	Blocchetto x estrazione piombo	Block	1
26*		3M2641	Sensore Distanza x ALU-S	Sensor Distance ALU-S	1
27		3EC530	Cavo 1140-ALU-SE	Flat Cable	1
28*		3M2573-2	Braccetto Compl. Tast. ALU-SE (13-25)	Rod	1
29*		3M2642	Sensore diametro x ALU-S	Sensor Diameter ALU-S	1
30*		9V674051	Rondella piana ø3		4
31*		9V201069	VITE A TESTA TONDA , M 3 X 10 , UNI-5931 , CLASSE 8.8		2
32*		9V669057	DADO , UNI-5588 , M 4 , CLASSE 8		1

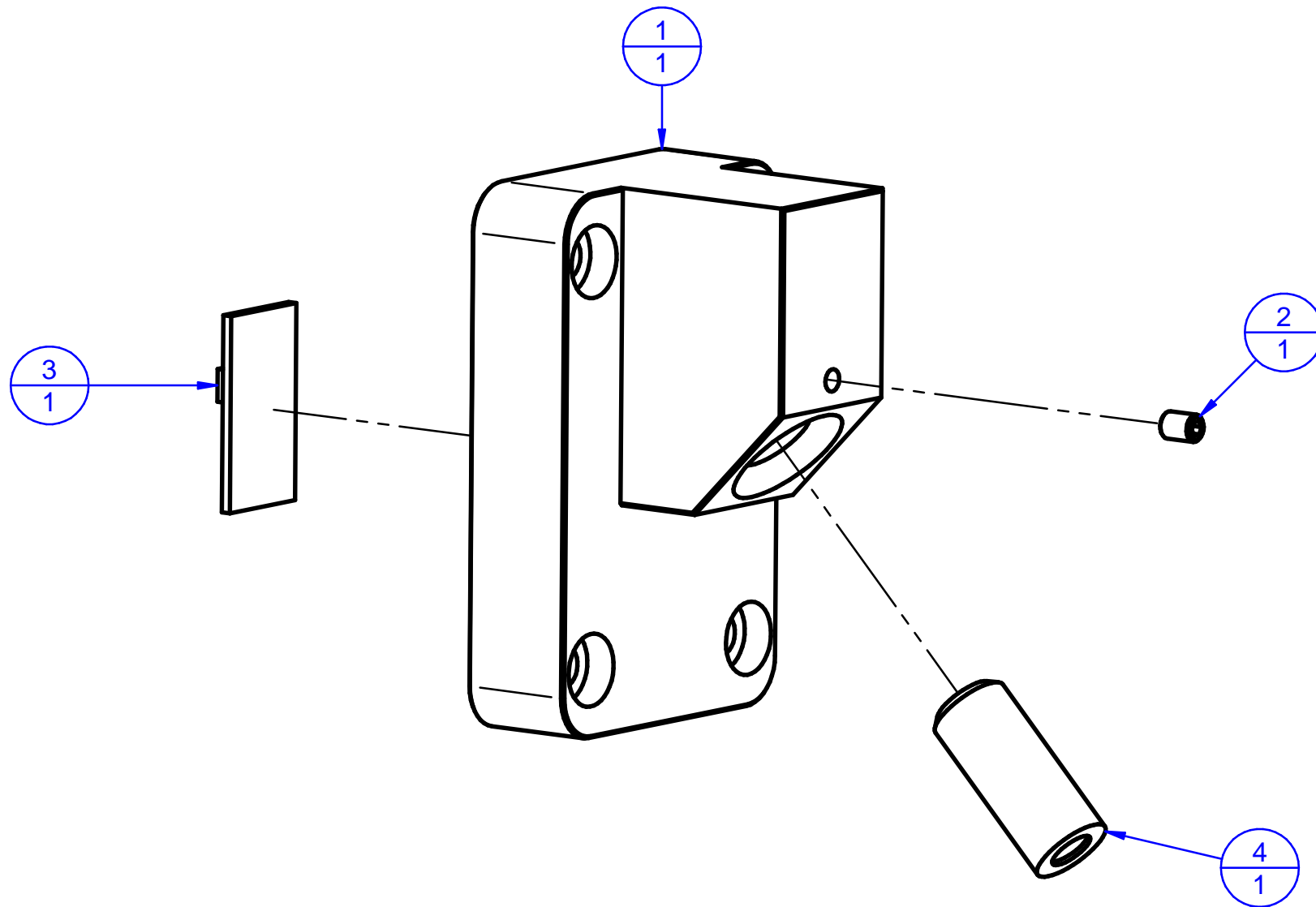


LE INFORMAZIONI CONTENUTE IN QUESTO DISEGNO SONO DI PROPRIETA ESCLUSIVA DI FASEP 2000 srl. TUTTI I DIRITTI SONO RISERVATI. (THE INFORMATION IN THIS DESIGN ARE PROPERTY FASEP 2000 srl. ALL RIGHTS RESERVED)

Legenda:  Ref. number  Q.ty		Codice (Code): 3M880	Descrizione / Description: Sistema misura esterno M12 (SME) V555/08 External measuring rod assy	Rev: R0	Data (Date): 13/06/17	 FASEP 2000 s.r.l. Ronta - Firenze - Italy
--	--	---------------------------------------	--	-------------------	---------------------------------	--

Powered by Solid Edge ST5

POS	RSP	Codice (Code)	Descrizione	Description	Q.tà (Q.ty)
1		4M3520	Coperchio x supporto Sistema m. (corto)	SME Cover	1
2		3EC540-5	Cavo Prolunga 1137-SME Sonar 12V	SME Sonar 12V Wiring	1
3		4M3519	Supporto Sistema di misura esterno (corto)	Holder	1
4		2M2869	Anello in Nylon	Bearing	2
5		4M2889	Perno a snodo	Pin	1
6		3M2885	Braccio completo di Beccuccio	measuring arm	1
7		2M2880	Settore dentato M1	Gear Sector	1
8		4M2892	Squadretta x Sistema Mis. Est.	Pot holder	1
9		9V094019	Anello Seeger ø30 E	Seeger Ring	2
10		2M3022	Vite TCCE M8x42 (Gambo Cil.)	Bolt	1
11		2M1057	Molla a trazione	Spring	1
12		9M2917	MOLLA TR 13 De8 d1 Lo27.3	Spring	1
13	x	3M2893	Sensore SME Completo	assembled sensor	1
14		9E0671	Passacavo VZ 410 H	cable guide	1
15		9E3366-2	Conn. M12 4Pin + Cavo 5m	Wiring	1
16		2M3762	Base scatola	basic box	1
17		2M3763	Coperchio Scatola	box cover	1
18		4M3788	Contrappeso Interno	Counterweight	1



Legenda:

2 — Ref. number
1 — Q.ty

◊ — Sub-table exists

Codice (Code):

3M899

Descrizione / Description:

Laser Line kit
Kit laser linea

Rev:

R0

Data (Date):

06/10/05

FASEP
FASEP 2000 s.r.l. Ronta - Firenze - Italy

Posizione	Codice	Descrizione	Description (English)	Quantità
1	4M4388	Supporto laser linea	Laser line support	1
2	Standard part	Grano EI M3x4	EI M3x4 grub screw	1
3	3ES664	Scheda 1173-00	1173-00 Board	1
4	9E3476-1	Puntatore laser linea	Laser line pointer	1