



*Tyres Equipment & Tools*

## **PARTI DI RICAMBIO**

SPARE PARTS

PIÈCES DE RECHANGE

ERSATZTEILEN

REPUESTOS

PEÇAS DE RECÂMBIO

RESERVDELAR

ЗАПАСНЫЕ ЧАСТИ

## **SMONTAGOMME**

TYRE CHANGING MACHINE

DÉMONTE PNEUS

REIFENWECHSLER

DESMONTA-NEUMATICOS

DESMONTA-PNEUS

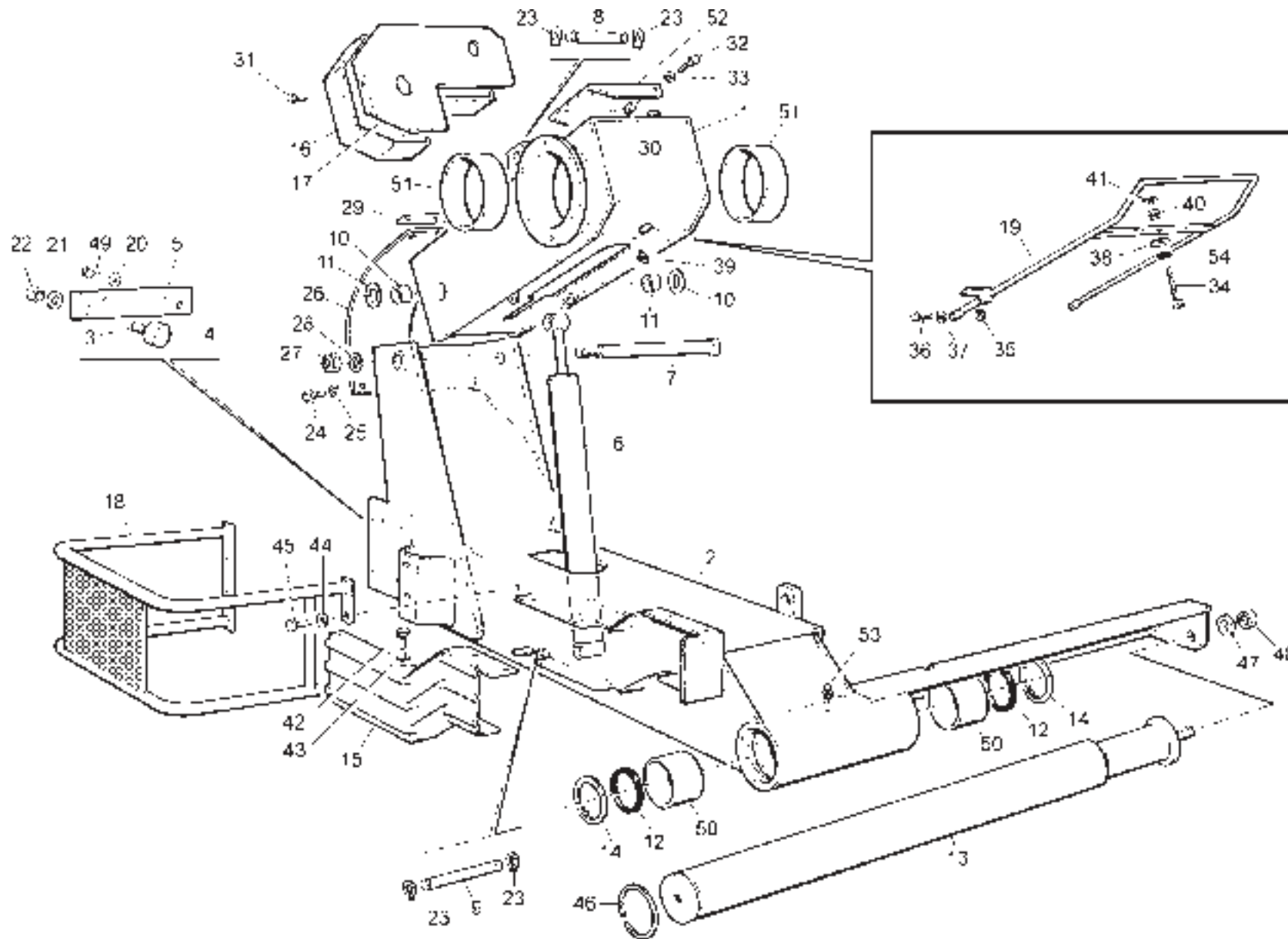
DÄCKMONTERINGSMASKIN

ШИНОМОНТАЖНЫЙ СТАНОК

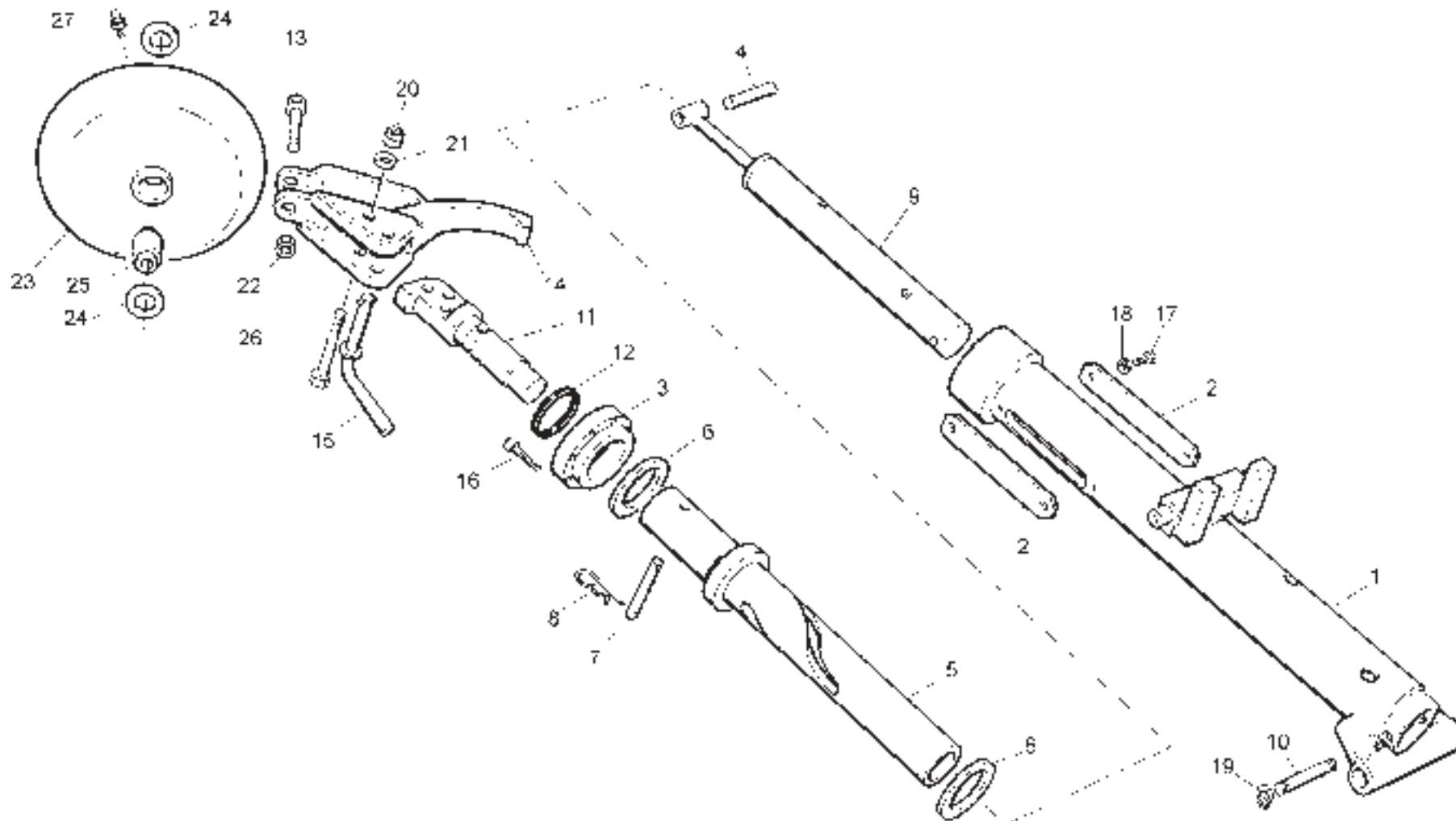
N° 301633 REV. 1  
N° 301634 REV. 0  
N° 301635 REV. 1  
N° 301636 REV. 0  
N° 301637 REV. 0  
N° 301638 REV. 0  
N° 301639 REV. 0  
N° 301640 REV. 1  
N° 301928 REV. 0  
N° 301624 REV. 0  
N° 301641-01 REV. 0  
N° 301641-02 REV. 0  
N° 301641-03 REV. 0  
N° 301641-04 REV. 0  
N° 301641-05 REV. 0  
N° 301641-06 REV. 0  
N° 301641-07 REV. 0  
N° 301641-08 REV. 0

---

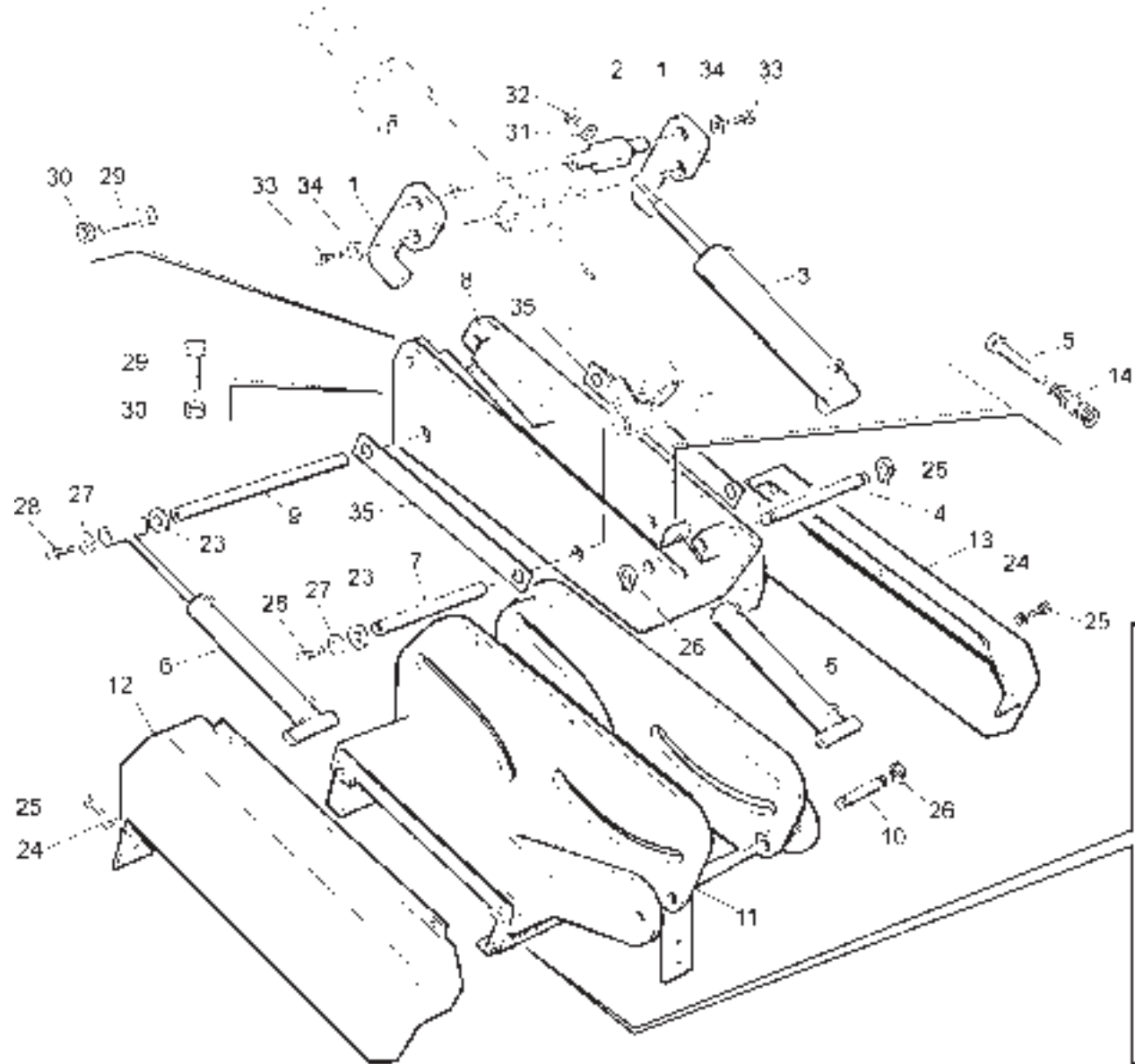
# **JUMBOTCS 60**



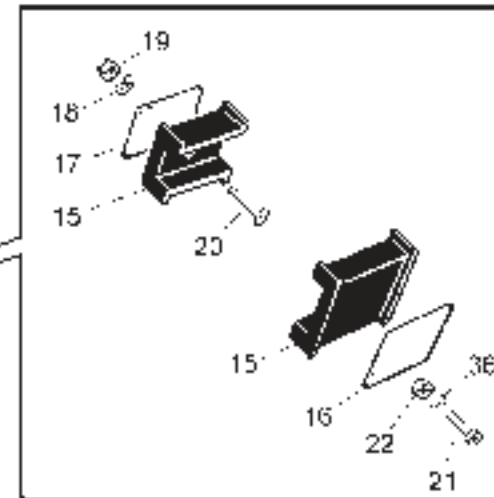
N°	COD.
1	- 301378
2	- 301393
3	- 301417
4	- 301416
5	- 301412
6	- 301389
7	- 301418
8	- 301439
9	- 301438
10	- 301455
11	- 301444
12	- 42415
13	- 301497
14	- 42513
15	- 301467
16	- 301531
17	- 301532
18	- 301485
19	- 301554
20	- 40061
21	- 40055
22	- 40072
23	- 40708
24	- 70411
25	- 02104
26	- 301622
27	- 40053
28	- 40106
29	- 301621
30	- 02003
31	- 40341
32	- 10502
33	- 02101
34	- 40030
35	- 40029
36	- 20402
37	- 02104
38	- 40517
39	- 40322
40	- 02004
41	- 40031
42	- 20301
43	- 40171
44	- 02101
45	- 20510
46	- 42457
47	- 40106
48	- 40053
49	- 40035
50	- 301395
51	- 400006
52	- 300528
53	- 40322
54	- 40173

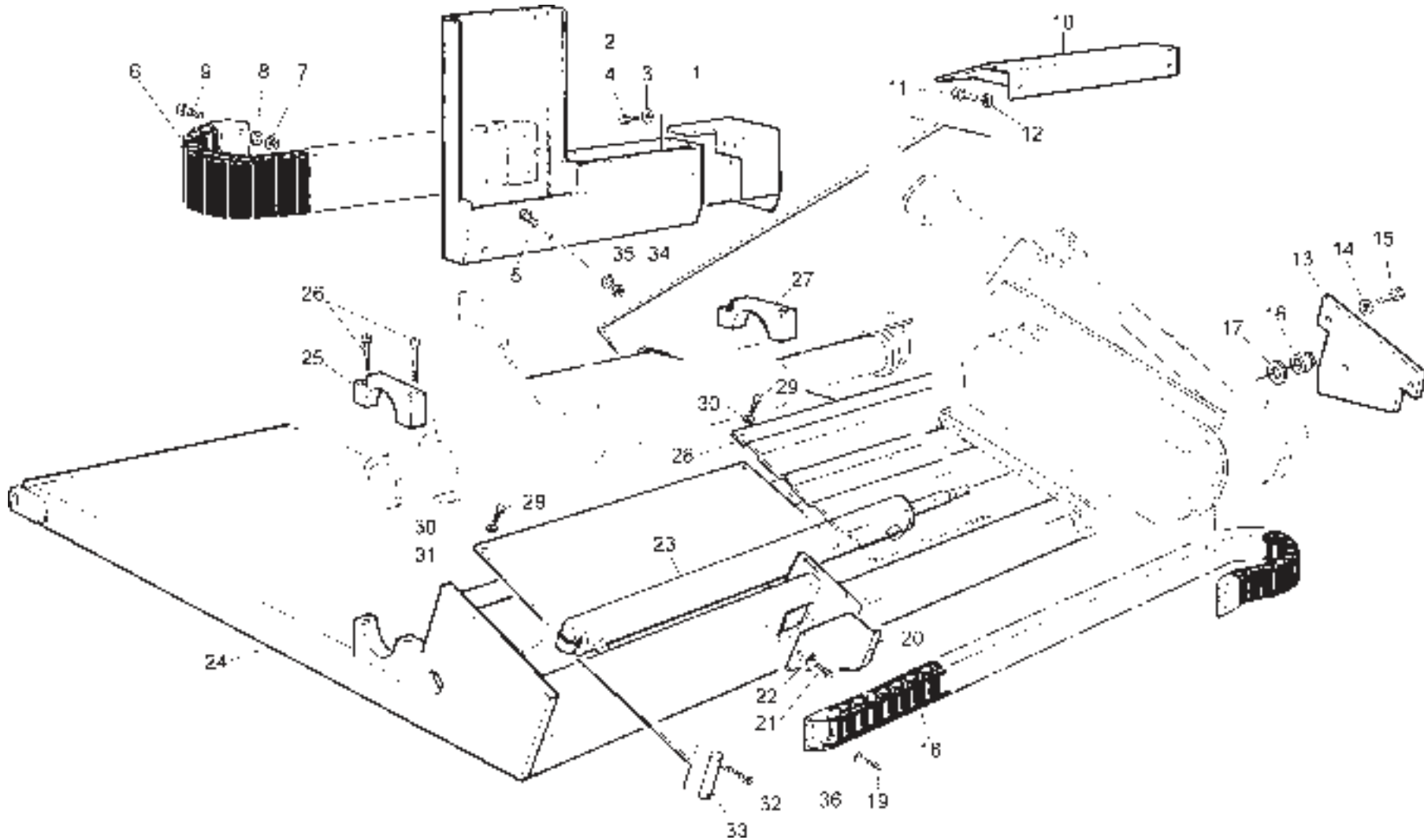


N°	COD.
1	- 301477
2	- 301476
3	- 301527
4	- 301479
5	- 301480
6	- 301481
7	- 300586
8	- 40039
9	- 301496
10	- 301559
11	- 300299
12	- 40712
13	- 301566
14	- 301565
15	- 300890
16	- 40058
17	- 40022
18	- 02104
19	- 02202
20	- 40072
21	- 40055
22	- 40408
23	- 301579
24	- 301583
25	- 301584
26	- 41115
27	- 40046

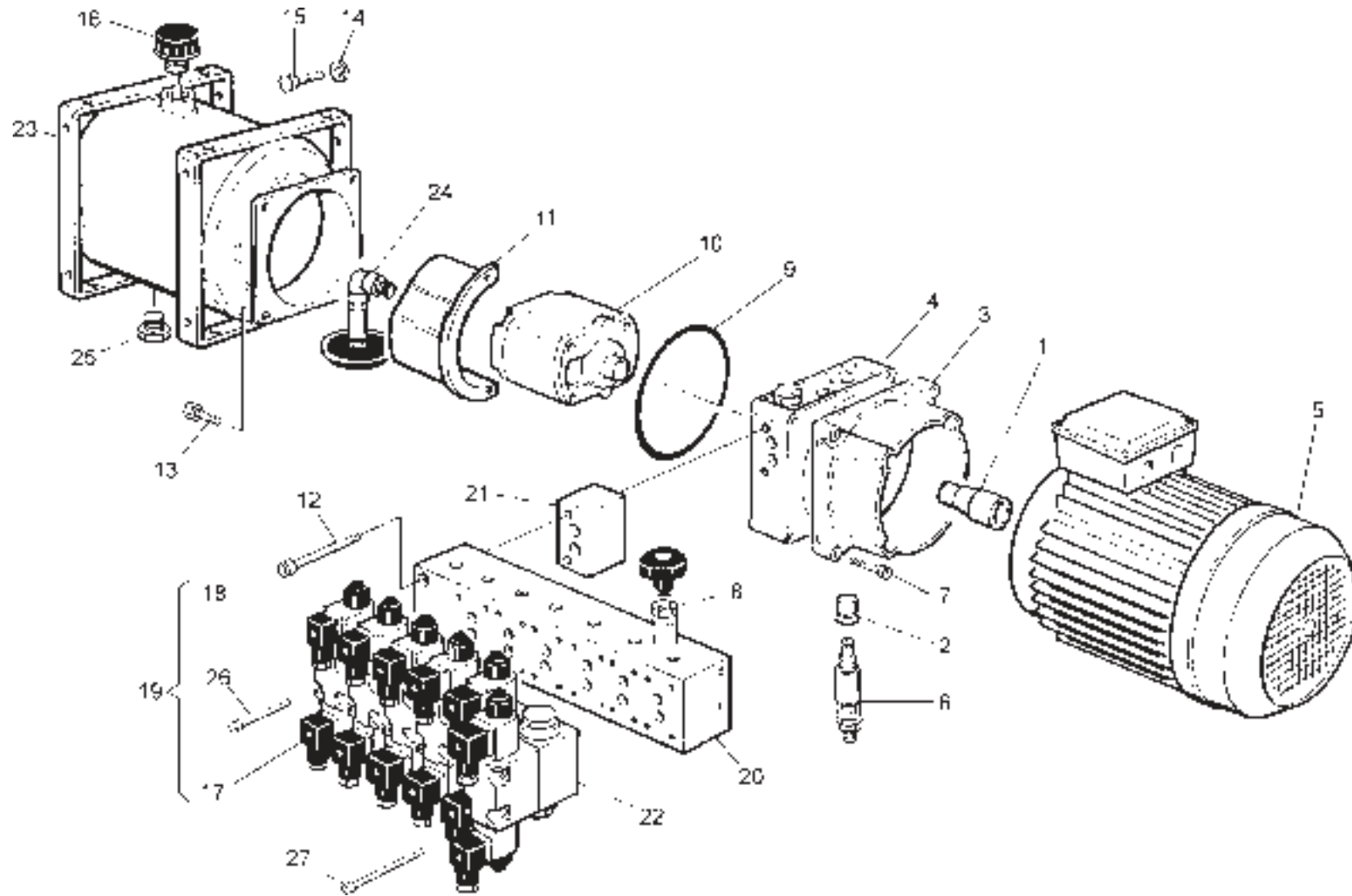


N°	COD.
1	- 301441
2	- 301475
3	- 301494
4	- 301473
5	- 301558
6	- 301495
7	- 301471
8	- 301458
9	- 301472
10	- 301474
11	- 301465
12	- 301493
13	- 301492
14	- 301557
15	- 300232
16	- 300233
17	- 300322
18	- 40163
19	- 40812
20	- 40200
21	- 40409
22	- 40307
23	- 301482
24	- 02104
25	- 70411
26	- 02202
27	- 100438
28	- 40066
29	- 42458
30	- 40408
31	- 40061
32	- 40167
33	- 10502
34	- 02101
35	- 301514
36	- 40306

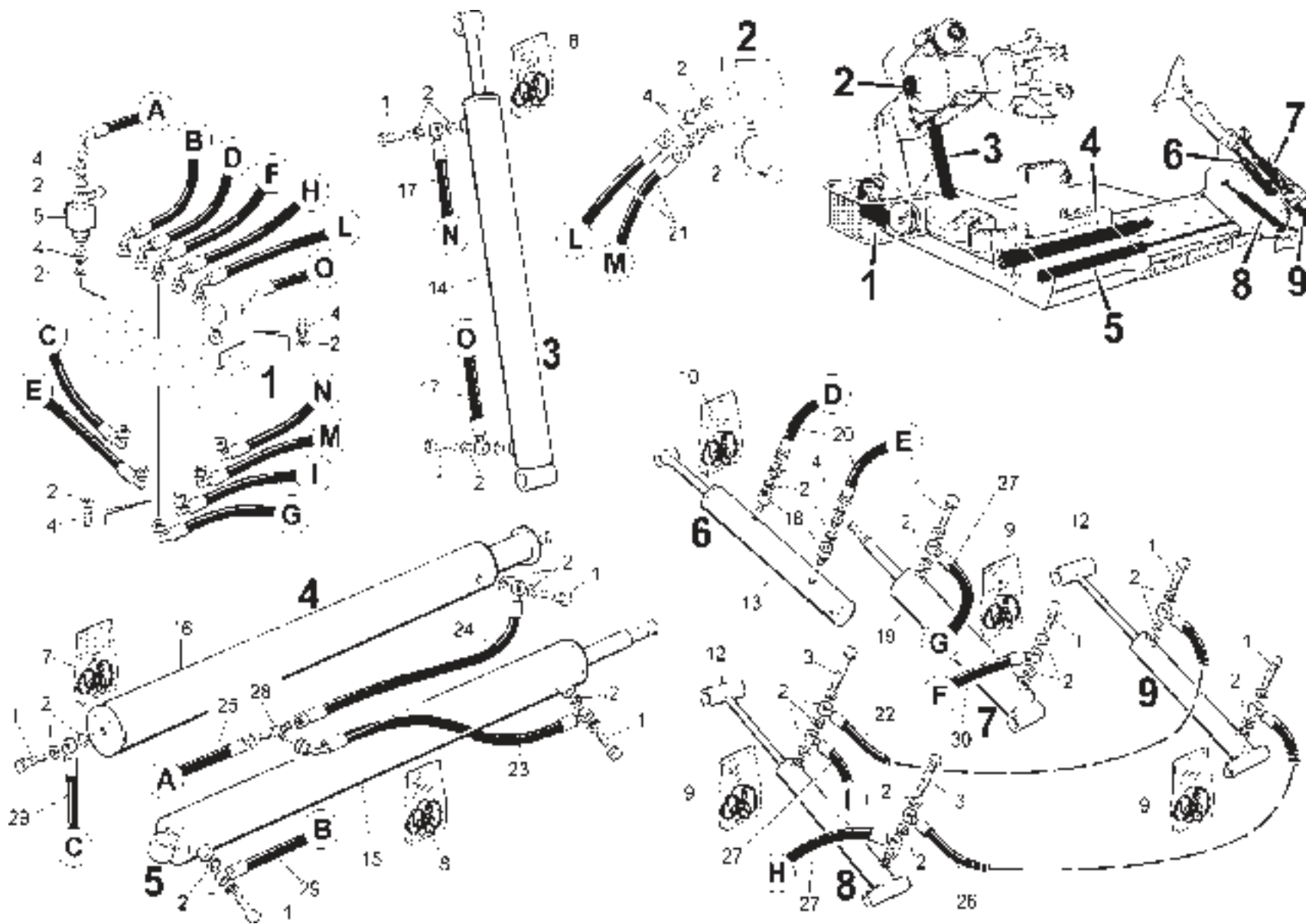




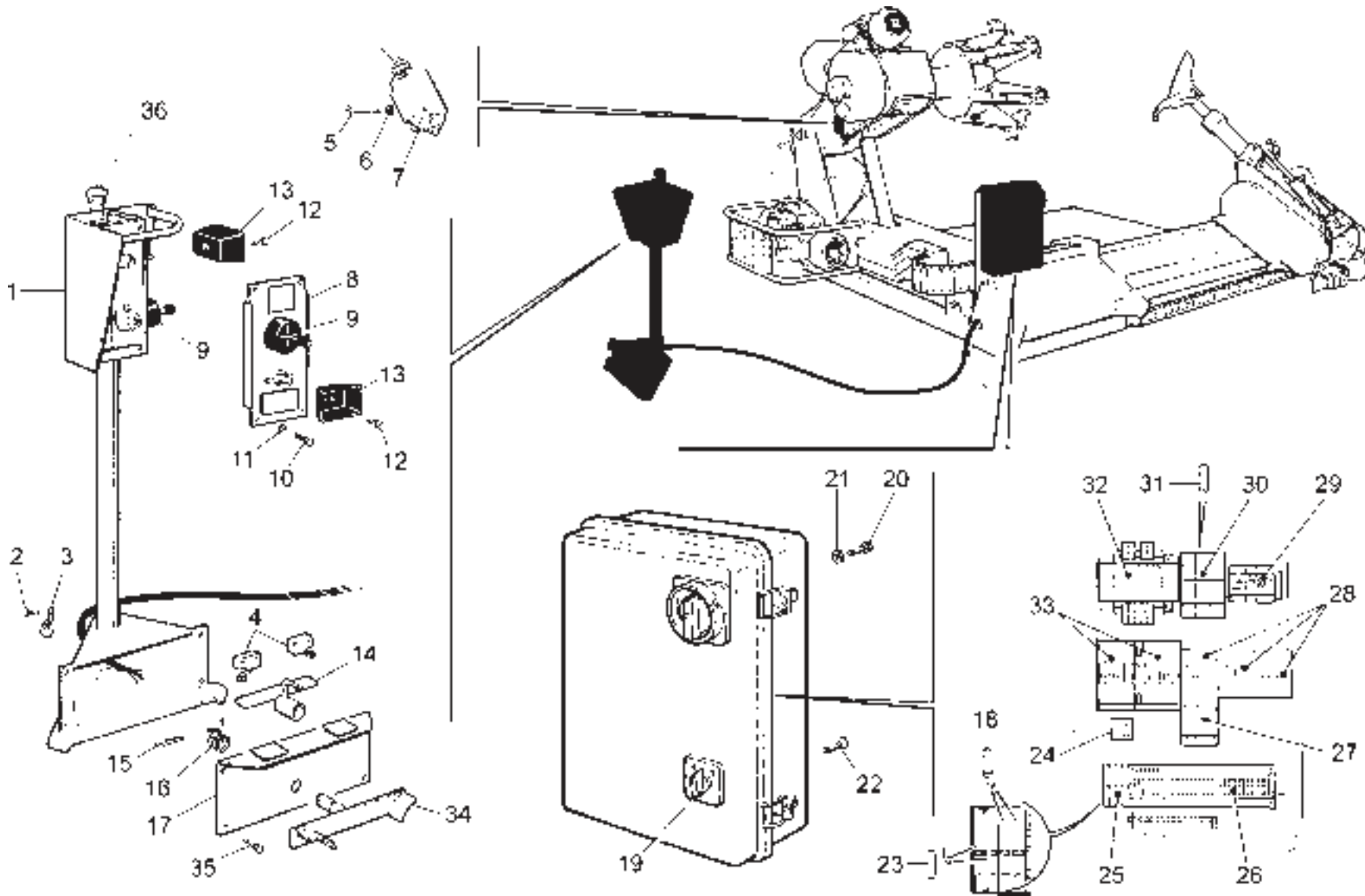
N°	COD.
1	- 301546
2	- 301528
3	- 02101
4	- 20510
5	- 10502
6	- 301598
7	- 40029
8	- 02104
9	- 70411
10	- 301875
11	- 70411
12	- 02104
13	- 301424
14	- 40070
15	- 40880
16	- 40277
17	- 40809
18	- 301597
19	- 70411
20	- 301530
21	- 40022
22	- 02104
23	- 301498
24	- 301464
25	- 301511
26	- 42334
27	- 301460
28	- 301433
29	- 70411
30	- 02104
31	- 301449
32	- 40511
33	- 300080
34	- 02003
35	- 02101
36	- 02104



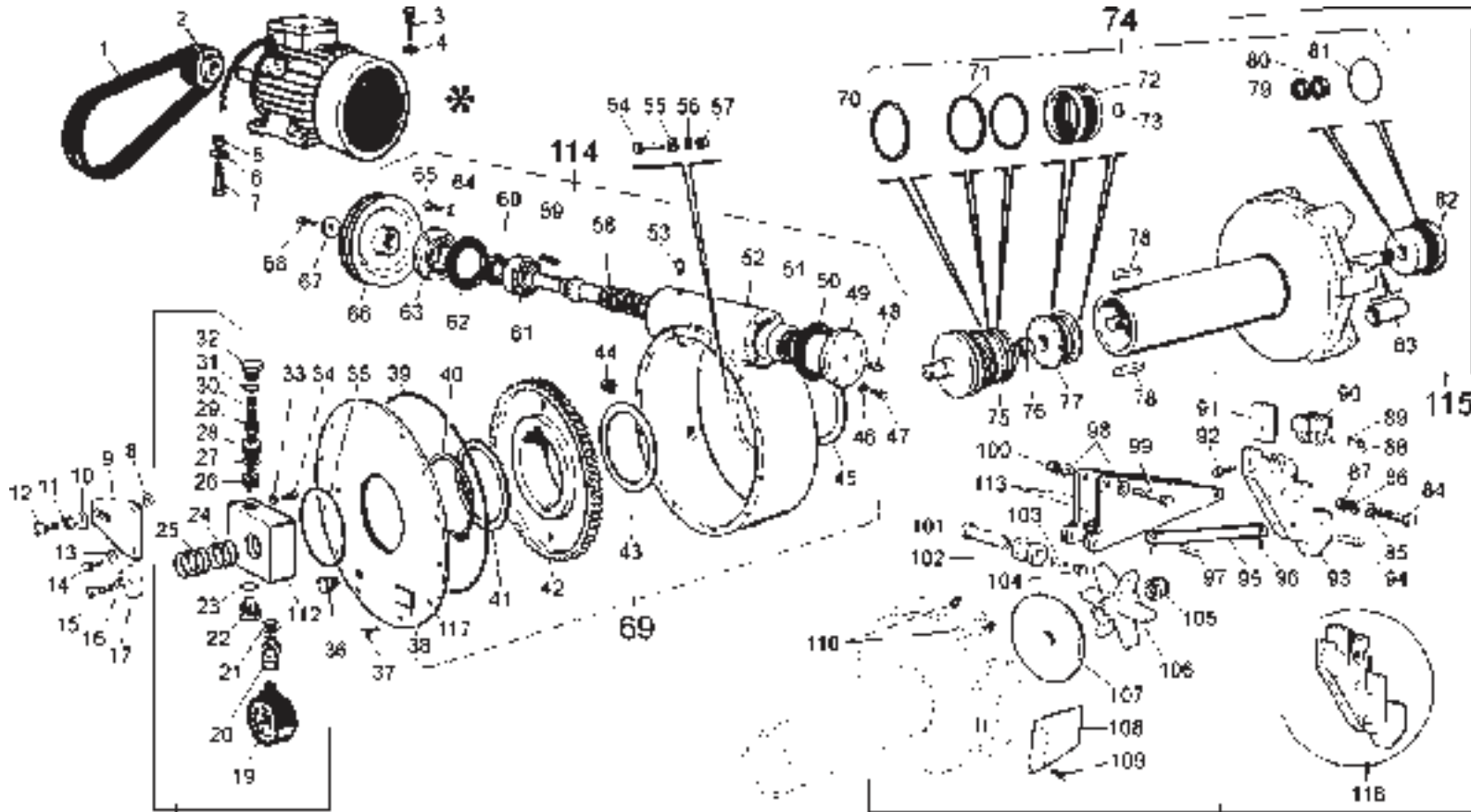
N°	COD.
1	- 42582
2	- 42583
3	- 42581
4	- 42580
5	- 42509
6	- 41945
7	- 20514
8	- 42584
9	- 42579
10	- 42578
11	- 42577
12	- 42586
13	- 10408
14	- 02101
15	- 20510
16	- 42574
17	- 40108
18	- 42199
19	- 42413
20	- 42585
21	- 41941
22	- 103203
23	- 42573
24	- 42576
25	- 42575
26	- 42601
27	- 42602



N°	COD.
1	- 300439
2	- 40073
3	- 42514
4	- 40069
5	- 42419
6	- 40746
7	- 42569
8	- 42570
9	- 42571
10	- 42572
12	- 301495
13	- 301496
14	- 301389
15	- 301498
16	- 301497
17	- 400108
18	- 42564
19	- 301494
20	- 301501
21	- 301506
22	- 301505
23	- 301508
24	- 301510
25	- 301509
26	- 301504
27	- 301502
28	- 42517
29	- 301507
30	- 301503

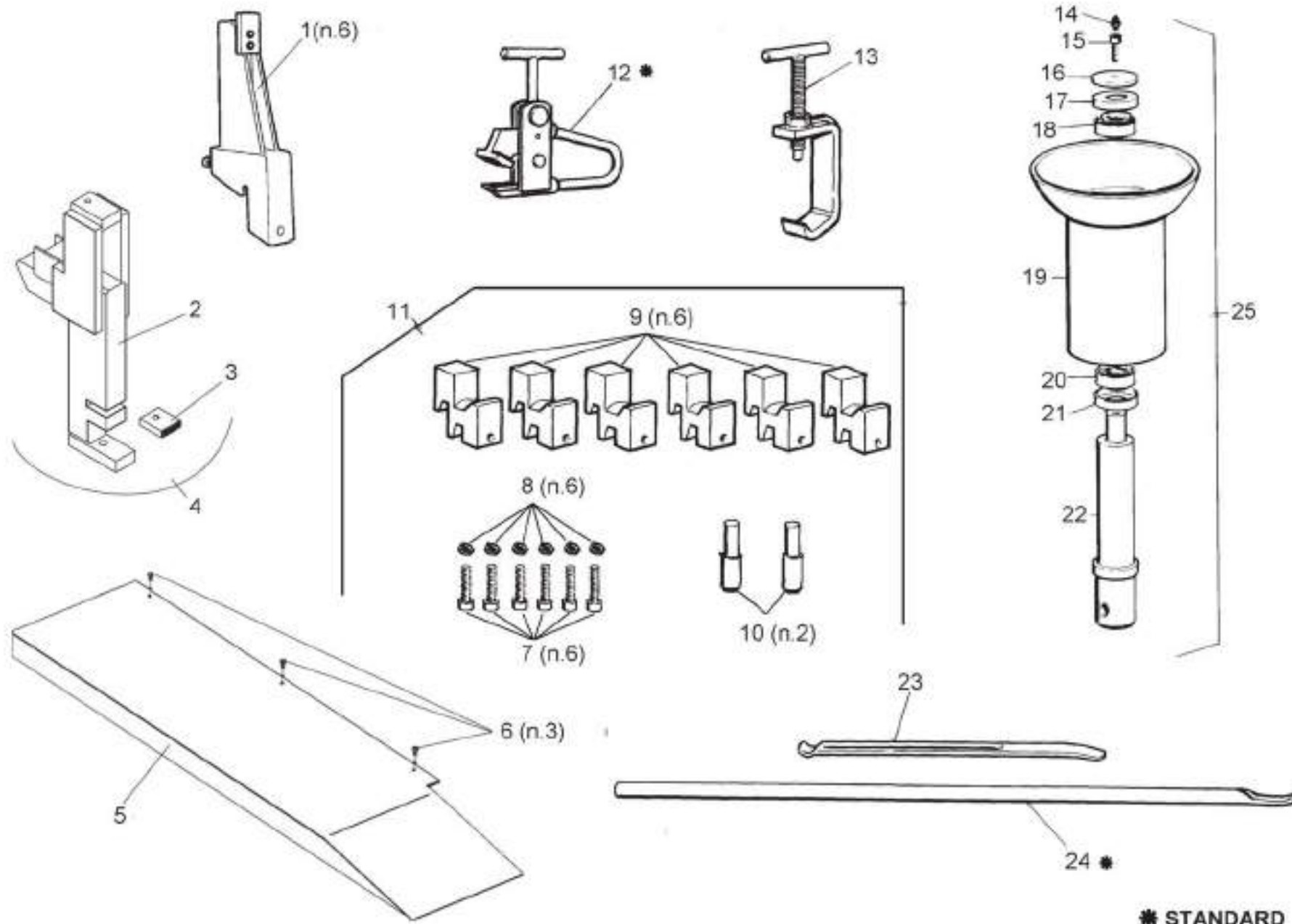


N°	COD.
1	- 300515
2	- 41197
3	- 40081
4	- 40078
5	- 40363
6	- 40163
7	- 42591
8	- 300443
9	- 300414
10	- 40142
11	- 40163
12	- 40270
13	- 300378
14	- 654480
15	- 02307
16	- 01227
17	- 300090
18	- 42593
19	- 42588
20	- 10502
21	- 02101
22	- 20709
23	- 42594
24	- 42590
25	- 42595
26	- 42589
27	{ 42599(400V) 42625(230V)
28	{ 42597(400V) 42626(230V)
29	- 42600
30	{ 42598(400V) 42627(230V)
31	{ 42587(400V) 42628(230V)
32	- 42592
33	{ 42596(400V) 42629(230V)
34	- 300091
35	- 40143
36	- 42658



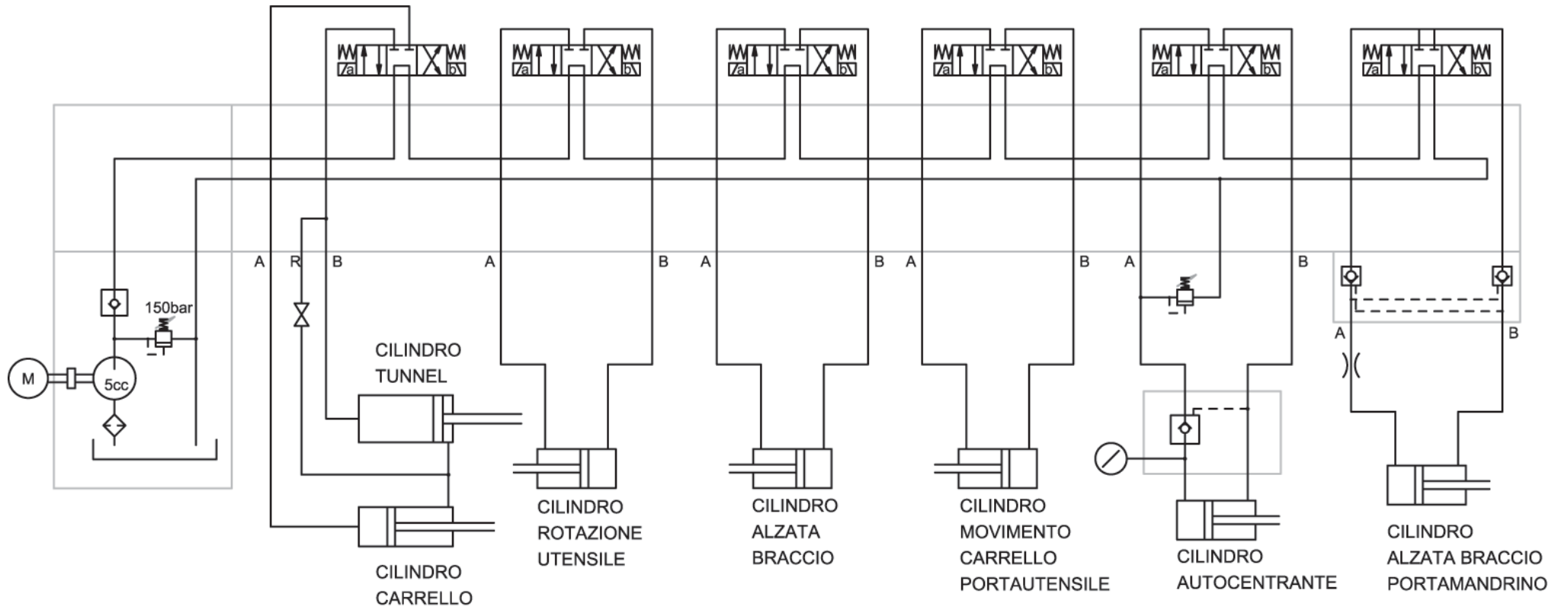
SPECIFICARE DATI	*				
SPECIFY DETAILS					
EIGENSCHAFTEN ERKLÄREN	VOLT	Ph	Hz	RPM	Kw
SPECIFICAR LOS DATOS TECN.					
SPECIFIER DONNÉES TECHNIQUES					

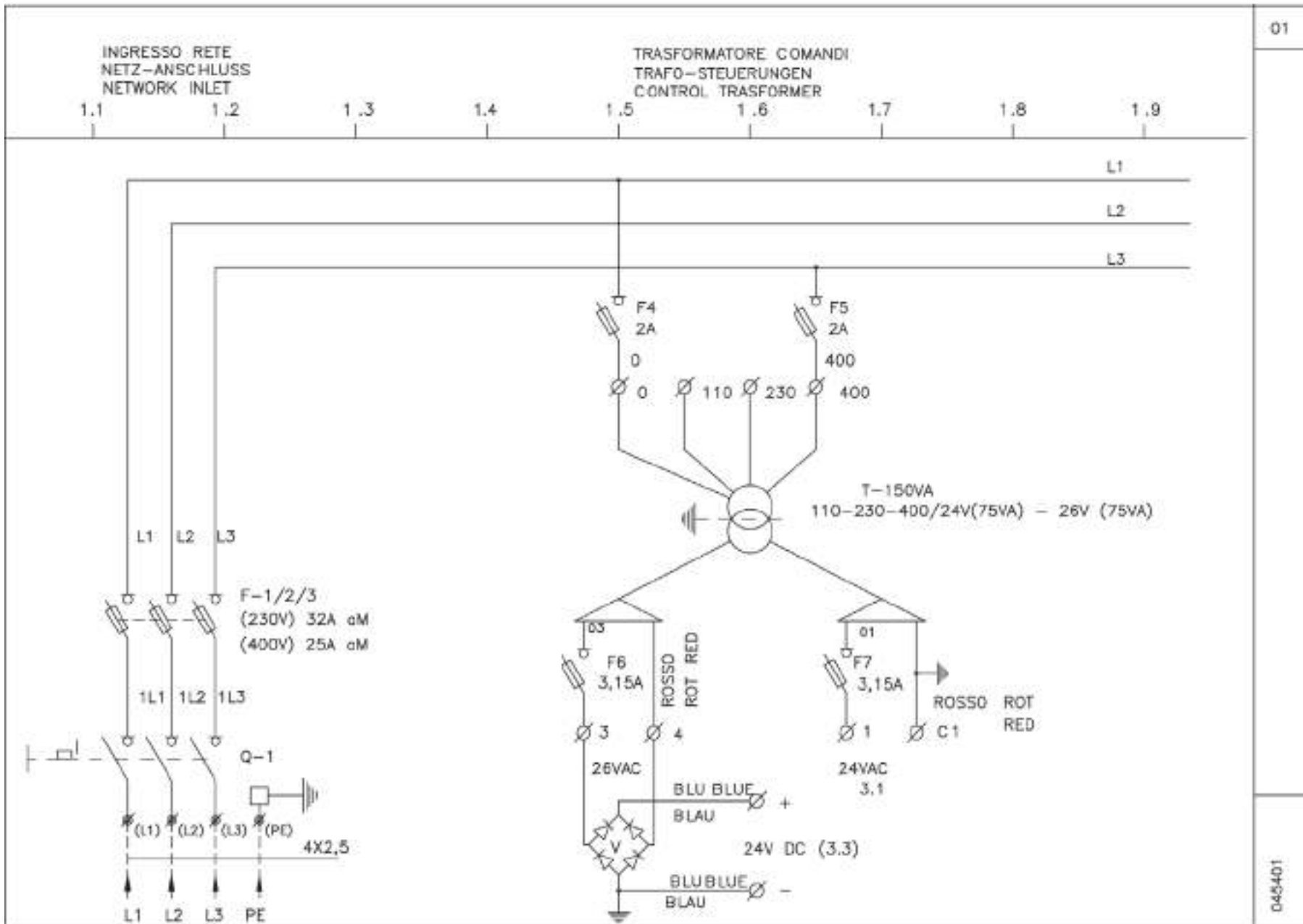
N°	COD.	N°	COD.
1	42198	61	05011
2	300616	62	05009
3	20515	63	300048
4	02012	64	02104
5	02012	65	10404
6	02102	66	300332
7	41098	67	100438
8	02102	68	10502
9	300404	69	400122
10	02102	70	40539
11	02012	71	40538
12	40016	72	40540
13	02104	73	40093
14	40022	74	40546
15	20402	75	400042
16	40517	76	40053
17	40203	77	400043
18	300432	78	40052
19	40118	79	40541
20	41268	80	40105
21	40536	81	40542
22	40535	82	400047
23	40529	83	300532
24	40093	84	301550
25	40098	85	40061
26	40534	86	40061
27	40533	87	40187
28	40532	88	42196
29	40531	89	301368
30	40530	90	301361
31	40529	91	301516
32	40528	92	40058
33	02104	93	301362
34	40022	94	300589
35	40593	95	300489
36	40103	96	20516
37	20402	97	300566
38	300367	98	40061
39	01414	99	301549
40	40526	100	40187
41	400001	101	301367
42	400053	102	300567
43	400113	103	02110
44	40047	104	40049
45	400113	105	40053
46	02104	106	301366
47	10404	107	301358
48	40046	108	301369
49	400051	109	70411
50	05009	110	01363
51	05011	112	300428
52	400052	113	300522
53	40046	114	400140
54	41098	115	301375
55	02102	116	301529
56	20710	117	400055
57	02012	118	301560
58	300054		
59	40051		
60	05017		



N°	COD.
1	- 301606
2	- 301689
3	- 301688
4	- 301681
5	- 301879
6	- 40066
7	- 42529
8	- 40070
9	- 301574
10	- 300389
11	- 301575
12	- 300099
13	- 300098
14	- 40046
15	- 300562
16	- 300853
17	- 40971
18	- 40972
19	- 301842
20	- 40972
21	- 40971
22	- 300852
23	- 102683
24	- 300094
25	- 300102

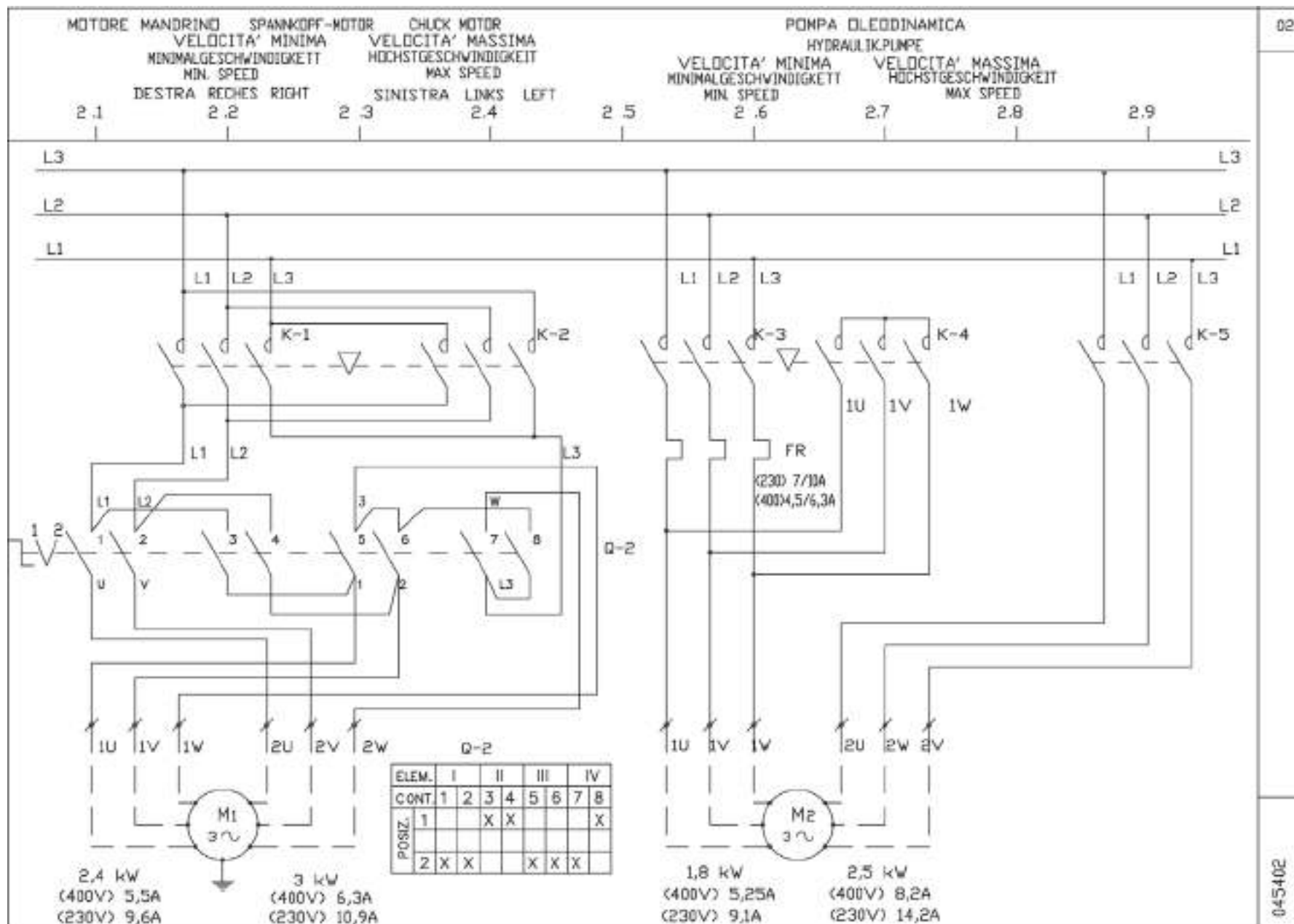
\* STANDARD



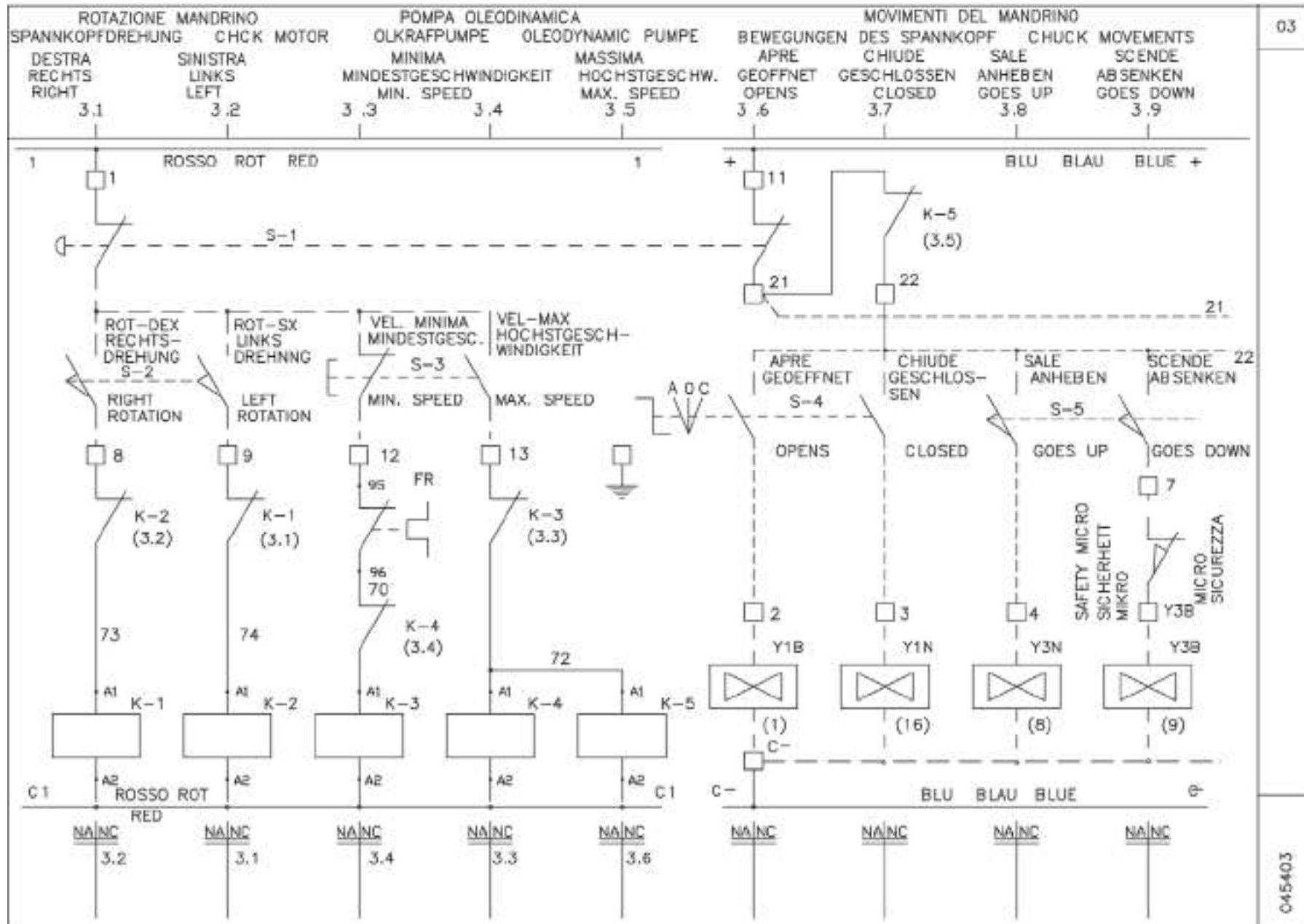


01

045401

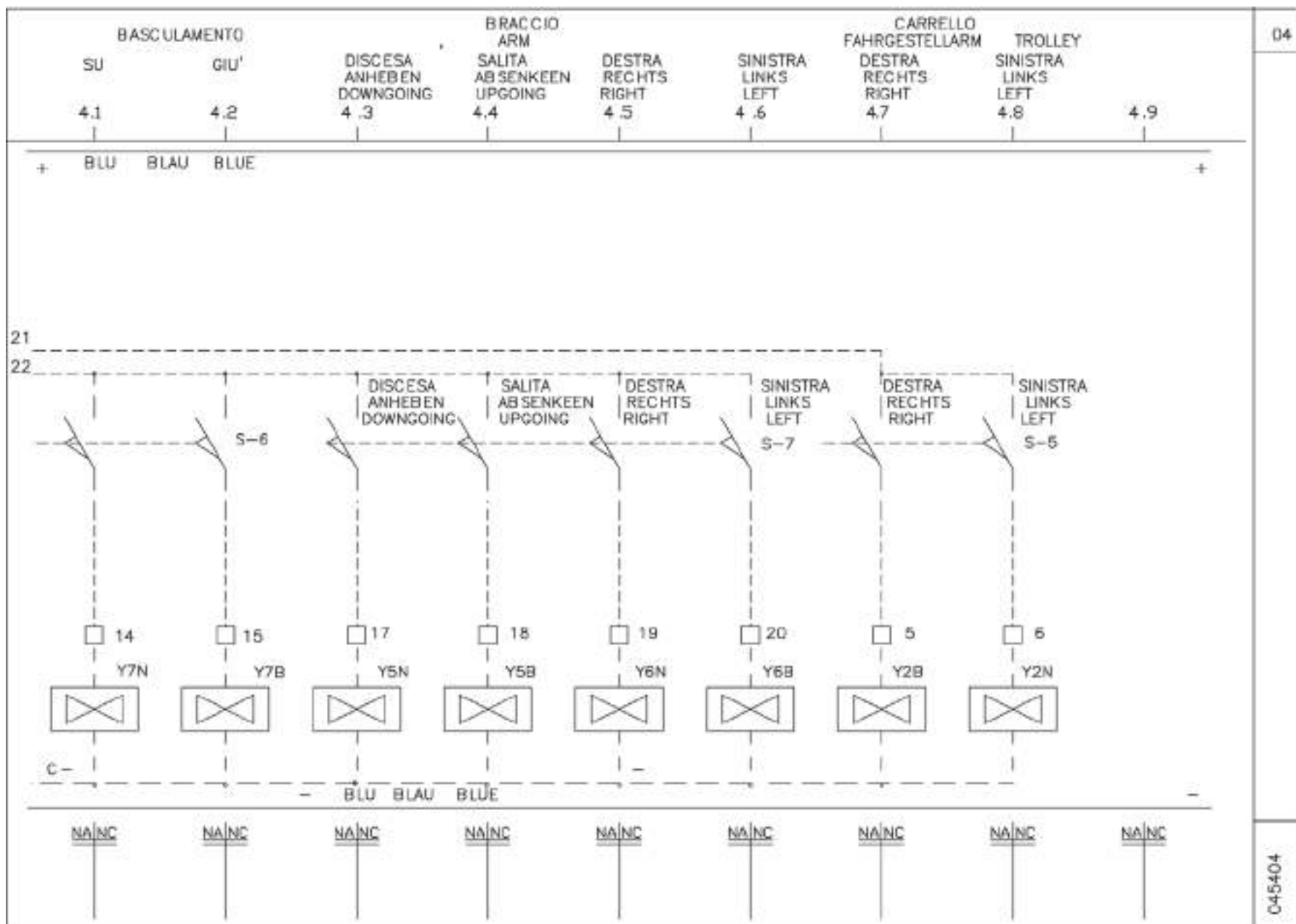


045402

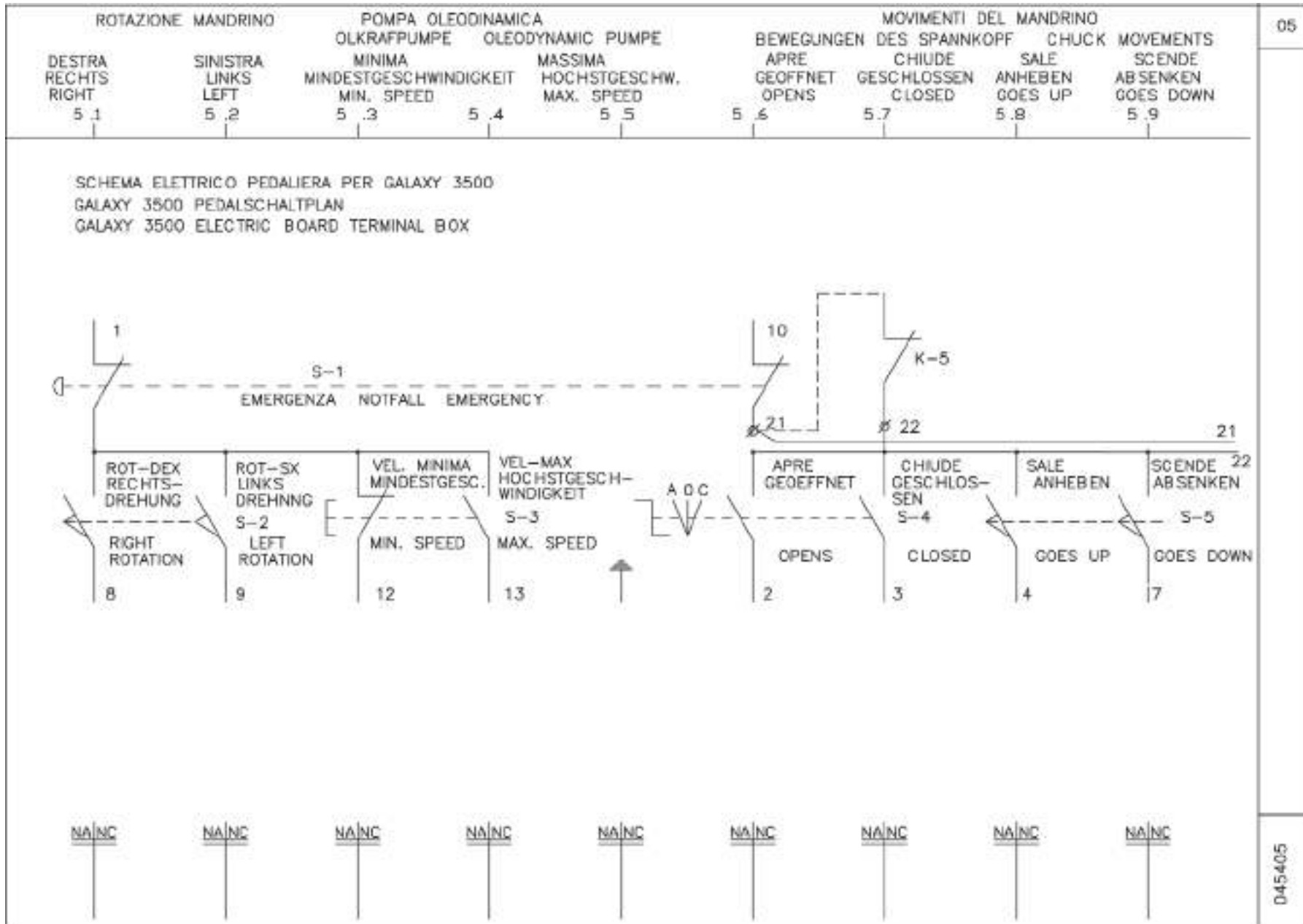


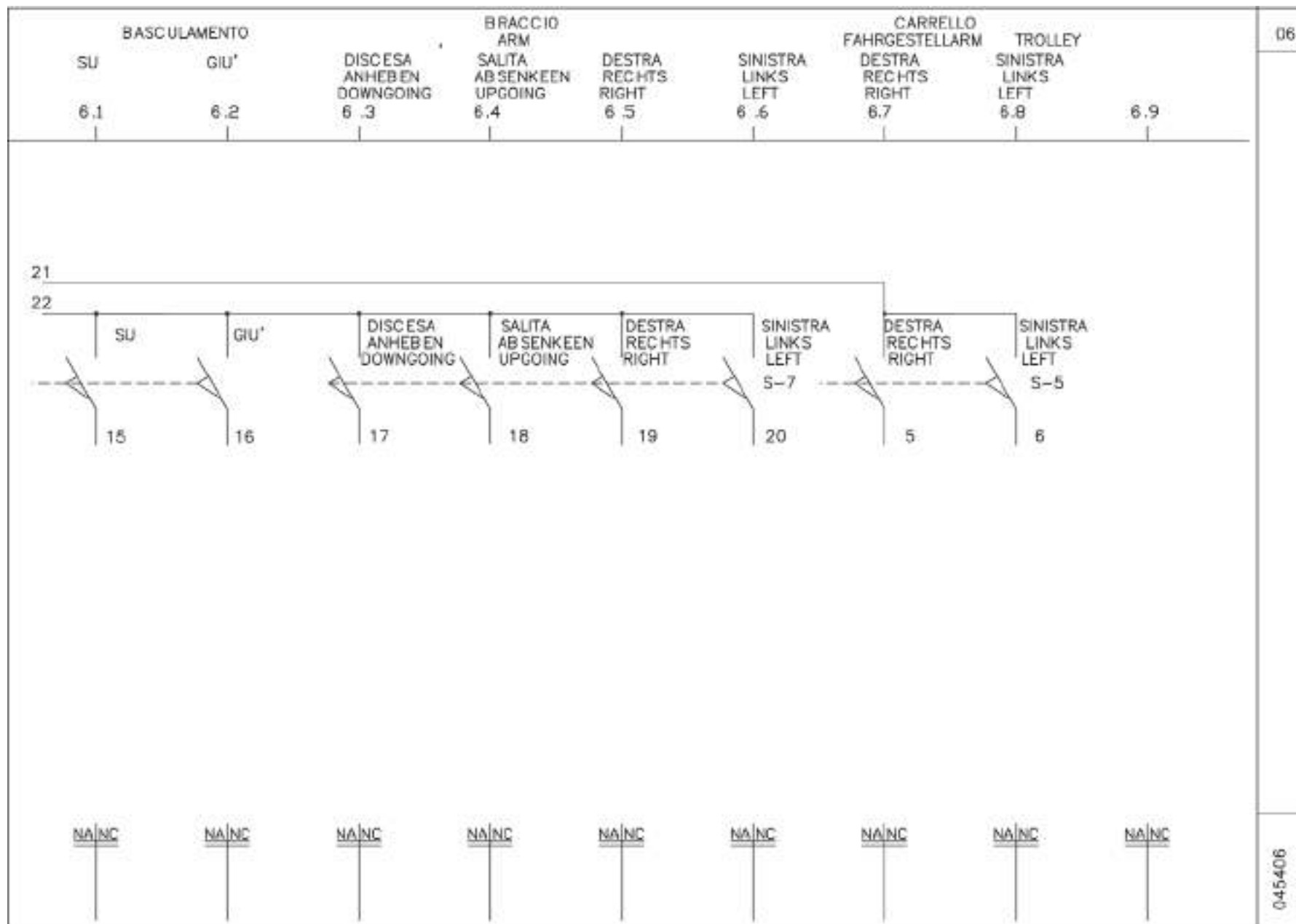
045403





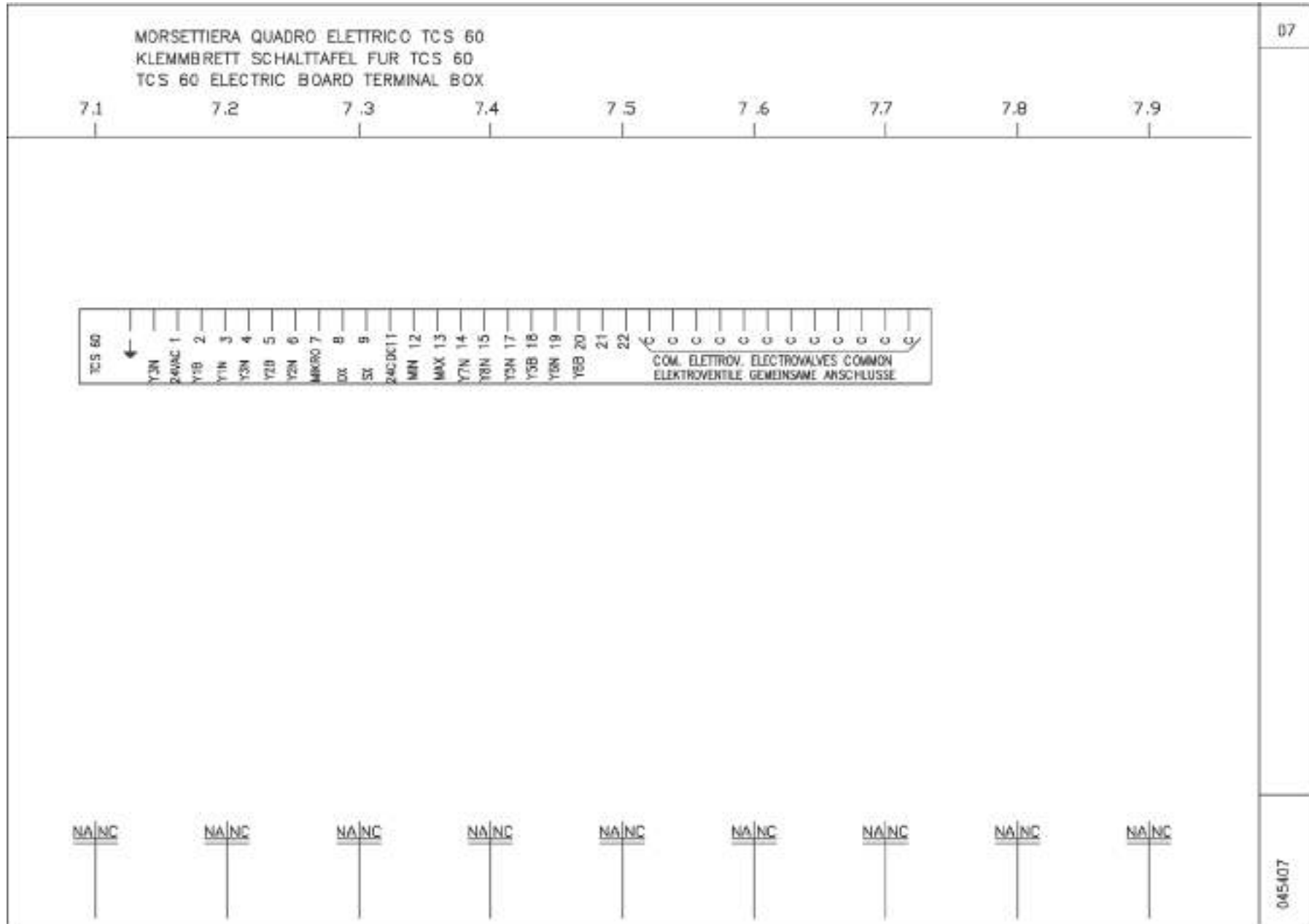
C45404





06

045406



## ELENCO MATERIALE PEDALIERA

			SUBPUNTI PEDALIERA		300442	
			CORPO PEDALIERA		300515	
			GRUPPO COPERTORE PEDALIERA		300111	
5.5	S-0	2	COMMITTORE A 4 POSIZIONI SICMA		300375 - 300376 300377 - 300380 300381 C-283161 IN 2 CRUZIZED	FENE
5.6	S-4	1	DEVIAZIONE INSTABILE CON COPERTORE		31F-C/2T+83 T16/1	SIEMENS
5.6	S-5	1	MILIGNE DIAM. 22		35R100C...14820-35R143R 08+35B1430-C5+35B193E	PIZZA' O SIEMENS
5.7	S-2	1	MOLICURA SICAM		M5-C9 (No2)	
5.7	S-1	1	P.J.SANTE DI EMERGENZA A FUNGO DIAM. 22		35B1502-14020+35B1433 -9C (No2)+35B1902-14C	

## ELENCO MATERIALE QUADRO ELETTRICO

1.2	F1.2.3	3	FUSIBILI 325A 4M		10X30 25A 4M	MINIAX
2.1	Q-2	1	COMMITTORE D' POLARITA' 5 KW		A1809	BREMAS
1.9			PIASTRINA TERMINALE F. BLOCCETTO DI F. 550020			
1.2		33	MORSETTO COMPOSBILE 2,5 mmq COMPLETI DI PETTINE		177205 I 160754 1706-1 + 954508	NU NU WD
1.5	V	1	PUNTE DI INALZAMENTO 24A 400V		1772050	MIC
2.3	E 4	1	MICROINTERRUTTORE DI SICUREZZA		4BPC3509	SIEMENS PIZZATO
1.8	T	1	TRASFORMATORE MONOFASE 150VA		35F3 100...0R F3 601	ARFS
1.5	F6	2	FUSIBILI 5X20 3,15A		100 VA CON SCHERMO PRIM. 112/230/400 24(100)-26(50)	WFRFR
1.7	F7	2	FUSIBILI 5X20 2A		5X20 3,15A	WEBER
1.8	F4	4	PORTAFUSIBILE PER GUIDA		5X20 2A	LARLUI
1.6	F5	1	INTERRUTTORE MECCANICO PER CONTATTORI		SRK 4	SIEMENS
1.7	F7	1	INTERRUTTORE MECCANICO PER CONTATTORI		JRA1923-2A	SIEMENS
2.6/2.7	K3-K4	1	CAVALLOTTI PER ANALISIGNI		JRA1924-2B	SIEMENS
2.9	K5	1	CONTATTORE TRIPOLARE INC 24V AC 50/60 Hz 7,5 kW 1 - kW		JRA 1923 .. 2A	SIEMENS
1.2	F/1	1	PORTAFUSIBILE TRIPOLARE SEZIONABILE 10X28 32A 600V COMPLETO DI FUSIBILE 10X30 25A 4M (430V)		JRT 1025 14C20 (400V) JRT 1028-14C20 (230V)	SIEMENS
1.2	F/2	1	PORTAFUSIBILE TRIPOLARE SEZIONABILE 14X51 50A 650V COMPLETO DI FUSIBILE 14X58 32A 4M (230V)		JRT 016-14R02 (400V) JRT1017-14R02 (230V)	SIEMENS
2.5	FR	1	RELE' TERMICO TRIPOLARE 4,5/5,3A 7/10A		C 13R03	OMEGA
1.2	O 1	1	INTERRUTTORE TRIPOLARE 3X25A		9LC 14X51	SIEMENS
					3R1116-1600 (400V) 3R1116-1580 (230V) 32503-112	SIEMENS
					SE33303B + 012/0501	SIEMENS
					300123A	SIEMENS
					SIGA E NORWA TYP. UND NORMENBEZE HFF FT NORMATEC 4U ANU NUNM	PRODUTTORE/FORNIT. HERSTELLER/VEFGR. PROD.LECTER/FORNIS. PROD.LECTER/SUPPLIER

044505

08



**SICAM S.r.l.**

Via della Costituzione 49

42015 Correggio (RE) ITALY

Tel. +39 0522 643311

Telefax: + 39 0522 637760

<http://www.sicam.it>

[sales@sicam.it](mailto:sales@sicam.it)